



No.77—Autumn 2022



Photo—Ian Kay, Waldringfield resident

Update on Brightwell Lakes August 2022

A vast number of new documents have been coming forward as part of the ongoing planning application process.

I've picked out a few highlights that might be of the most interest to our community in Waldringfield.

Bridleway closure along Ipswich Rd

Talyor Wimpey were anticipating that this bridleway would be re-opened in July ahead of schedule. We were disappointed that due to difficulties in re-siting the overhead cable this has over-run slightly but at the time of writing this article the footpath is now in the process of being re-opened.

Western access off Ipswich Rd

It has become clear that more trees will be removed from the site boundary between the new access road and the Stables cafe. The siting of the western access, so close to a bend in Ipswich Rd, has been a matter of serious concern for the parish council. The inevitable outcome is that the trees will be removed to allow an "improved" visibility display. The land between the access road and the Stables will be developed into a new business park – detailed drawings have yet to be submitted.

Delay in the building schedule

The building plan for the first parcels of land (317 dwellings) is now scheduled to start in February 2023 with completion of this first phase approximately 4 years later. The homes will be released in groups of around 20 across the different types. Taylor Wimpey informs us that 400 people have "registered an interest". Other parcels will be started before the completion of the first phases (details yet to be submitted)

Type of School

Discussions are ongoing with SCC. Current view is that the school is unlikely to be a single "through" school (ages 5-18). The site allocated for the school remains the same – currently no details of the building schedule.

Positive headlines!

All buildings throughout the development will be fitted with air sourced heat pumps. Planting plan now includes more native species trees and shrubs with a greater emphasis on those that are resistant to the effects of climate change.

The Parish Council will continue to monitor and respond to all of the applications related to the site. We will also continue to maintain regular contact with the developer and ESC Planners and we will of course keep residents updated regularly throughout the process. (For the next 17 years!)

Cllr Janet Elliot

COFFEE MORNINGS



The monthly coffee mornings (which are usually held in the village hall on the first Thursday of the month from 10am to noon), continue to be much appreciated by villagers and visitors.

Freshly brewed tea and coffee, accompanied by home made cake, is only £3.00 per person.

On entry each person will be given a free ticket and if their number is drawn, they will get their £3.00 reimbursed!

The coffee mornings are a great way of meeting up with friends and neighbours. Newcomers to the village can expect a warm welcome, so do come along.

There are usually stalls available, such as "Greener Waldringfield", the book swap (or buy), hand made cards, produce (when available), and more.

If you would like to have a stall, do please contact us.

Additional bakers (of sweet or savoury items), are always appreciated by the team, and we are happy to reimburse for ingredients. Additional helpers are also welcome.

We look forward to seeing you there.!

Kind regards, Chris Lyon (on behalf of The Coffee Morning Team) 01473 736291



Waldringfield Gardeners

The Produce Show will have come and gone by the time the Parish Newsletter is published – it will be interesting to see how this slightly earlier time has worked out.

Our next visit is to Fullers Mill Gardens on **Wednesday 21st September**. This seven acre site contains two areas, the Top Garden and The Strip, that are especially planted for hot dry soil – The Strip is even sometimes referred to as the Chatto garden, as that's where the plants came from. We will perhaps be interested after this searing heat, as to how we can adapt.

WG is a corporate member of the RHS so we get in 'free' on a Wednesday afternoon - perhaps we will make it worth their while by treating ourselves to lots of home made cakes! Please share lifts – we don't have a tour, but should try to time our entrance together: let's meet up at the entrance at 2.30 (**Wed 21st September**).

Other up-coming events:

Wildlife Gardening (Wildlife Group event but relevant to all gardeners) Saturday **8th October**, 11.00 – 12.00 Village Hall. WLG members free, visitors £3.

Pumpkin Party and Lantern Parade: Saturday **October 29th**, starting from the Village Hall at 5.45 pm and walking through Church Field to the river. Bring carved pumpkins, veggie boats to float on the river – bees wax candles so no pollution – and be prepared to be frightened: a new ghost story for this year!

AGM – Wednesday 23rd November 7.30 in the Village Hall: plans are afoot to make this much more exciting! But meanwhile save your seeds to swap. Membership (£5 per annum) is payable then.

Allotments: The Parish Council is actively trying to find a site. Multiple studies have found that the most efficient use of land and water and the maximum production per unit of both is by home or allotment growers – and with soil compromised and water short good use of both is increasingly necessary. Besides which growing veggies is fun!

If you would like an allotment – or half or quarter - please do make sure that your name is on the list kept by the Parish Clerk.

If you are a WG member you can join the WG What's App group where we regularly share tips, moments of pride, and surplus stuff.



Preserving your harvest: the **WG apple press** is available to borrow free to WG members - £10 until someone else needs it to others. Also the steriliser – bottle 14 jars of stewed apples or whatever at one go – no ongoing freezing costs and it keeps four years rather than four months in a freezer.

WALDRINGFIELD COMMUNITY COMPOSTING

Home composting is the gold standard of what to do with your garden cuttings, prunings, weeds etc. We have skilled advice available and some subsidised kit eg hotbins and bokashi bins available. There is no better way to increase the resilience of your soil to drought (and the heavy rain that might break it) than compost applied as a mulch.



MARTLESHAM HEATH SURGERY – PPG NEWS Summer 2022

The recent heatwave saw the PPG need to cancel their planned meeting on 19 July, the record-breaking hottest day. It was decided that with temperatures in the high 30's that the meeting would potentially be difficult and unproductive. The PPG plan to meet again in October, given how busy the team at the Surgery are with the transition to an independent surgery as of 1 August 2022. To the patients there should be little visible change.

Moving forward we are rapidly approaching the autumn and the Flu Vaccine season the surgery are currently planning the Flu Vaccination Program. Which will be delivered at the Surgery as in previous years. The programme will this year once again be expanded to include people aged 50-64 in addition to the usual over 65's, pregnant women and those with certain medical conditions.

This autumn will also see a further Covid-19 Booster for many people, these will once again be carried out at the Grove Medical Centre in Felixstowe. This booster will also be offered to a larger group essentially over 50's. Plus those under 50's who have a certain medical condition, are immunosuppressed or a family carer. The surgery will not be managing the Covid Booster rollout and therefore please do not contact them. You will be contacted if you are eligible by the NHS as in previous Covid Booster rollouts.

Recent attendees at the Surgery may have noticed the building works that have commenced in the Car Park to the rear of the surgery and in front of the surgery. Access will be maintained to the surgery whilst these works are completed.

Tony Willmott (PPG Chair)



Introducing the Anne Robson Helpline - if you or someone close to you is dying, you can talk to us.

At the Anne Robson Trust we aim to be there to listen to anyone who faces dying or the imminent death of someone they care about. We know that facing the end of life can leave you feeling isolated and alone.

Being able to access support is so important. Gaining knowledge of what may happen towards the end of life and being prepared helps both the person dying and their loved ones to feel a sense of control.

Calls are free and confidential. **Call us on 0808 801 0688 - we have time to talk**

Please visit www.annerobsontrust.org.uk/helpline-service to find out more.



Waldringfield Sailing Club

Established 1921

We have had a very good start to the year, with some wonderful weather and excellent sailing both for Club racing and Open meetings. The Easter Egg and Regatta were well attended and thanks to all those who helped with organisation, safety and catering, the events were a great success.



Photograph courtesy of Alexis Smith

The Regatta Weekend saw a well-attended Yacht Timed Passage Race and the ever memorable, traditional Yachtsman's Service with musical accompaniment from the wonderful Woodbridge Excelsior Band.



Wednesday evening magic – photos courtesy of Ari Liddell

We now look forward to our Cartoon Trophy Weekend, Saturday 10th to Sunday 11th September, where we expect some visiting sailors and a good weekend for racers and spectators alike.

The Club continues to maintain a healthy membership and thanks to the very large number of volunteers, manages to keep the building and services running at a low cost to members.

If any villagers would like any more information about the Club or it's activities, any of the Flag Officers would be delighted to be contacted.

Commodore (Peter Mills) commodore@waldringfieldsc.com

Vice Commodore (Anne Spalding) vicecommodore@waldringfieldsc.com

Rear Commodore (Richard Atkins) rearcommodore@waldringfieldsc.com

Peter Mills, Commodore

Dragonfly Open Event

31 July 2022



Photograph courtesy of Alexis Smith

The first boat launched was in May 1949, sail No17. There are sail numbers up to 46, however 13 was never built!

The boats were built by local boat builders Nunn and Robertson yards. The last boat was finished by James Palmer in 2010, No46, Phoenix.

Over the last 10 years a number of them have been restored and the boats are probably in the best condition since the 1960s.

There are currently 12 boats which are river worthy. We have a storage area with another 4 which need restoration. That is the total number Dragonfly's left! The rest have all been destroyed or vanished.

Richard Smithson, Dragonfly class captain



Photographs courtesy of Alexis Smith

A Tree Warden Writes



Tree Wardening

The village now has three tree wardens as Greener Waldringfield have appointed Betsy Reid and Mariah Ballam, while I continue as the one appointed by the PC. We will all be working together for the benefit of trees in our village. The Tree Council is the body in charge of tree warden training and resources and we are able to access workshops re tree diseases and other tree related aspects of life.

The tree nurseries are struggling under the drought conditions we have had for the last few weeks as are all gardeners. Some ways of keeping young trees alive until they can be planted out in autumn are:

- Stand all the pots in a shallow tray or other container without holes so that when you water the surplus is still there for the pot to soak up.
- Stand them all in the shade and in a sheltered place out of the wind which causes more water loss.
- Plants in larger pots of soil have more resilience than those in small pots. Sometimes the compost has shrunk so volume in the pot is very small and they can be transferred to bigger pots with more compost, without disturbing the root ball.
- We are of course using grey water but not on new seedlings, if it might have a bit of soap in it although even that is better than nothing in my opinion. I am not aware of any trees dying as a result of washing up water.



If anyone would like to plant a Sweet Chestnut in their garden I have a few, small but they will grow. Other species are available!

In November Mariah will be supplying the Queens Green Canopy trees to those who ordered them together with some planting and maintenance advice. Mariah also hopes to arrange another hedge laying course and other green skills courses so watch for more details.

Christine Fisher Kay, Tree Warden—01473 736384

Sweet chestnut seedlings, Waldringfield provenance.



Waldringfield History Group

Waldringfield History Group will be re-starting their regular monthly meetings again on:

Thursday 8th September. 14.00 - 17.00

in the Kennedy Room at the Village Hall.

New members are always welcome. For more information about membership, please contact Hon Sec: Margaret Lake at waldringfieldhg@gmail.com, we would love to see you, especially if you have an interest in the history of the village

The first meeting of the year is a chance to catch up with members' current research, news and finds during the Summer.

Some WHG members have been collaborating with Waldringfield Sailing Club in the production of their book to celebrate their Centenary. Hopefully there will be new information and pictures about people and families who often had a long association with and were fond of the village, but not necessarily able to live here and who came regularly to the sailing club.

On **10th November** we hold our AGM (a very short meeting) followed by our monthly meeting.

SEE YOUR ADVERT HERE

TO ADVERTISE FOR AS LITTLE AS £12 PER QUARTERLY ISSUE

CONTACT THE PARISH CLERK

pc.waldringfield@googlemail.com

Next Copy Date – 11th November 2022

(for publication from 1st December 2022)



Greener Waldringfield

Our regular **monthly meetings** are on the fourth Thursday of the month, from 5.30 until 7.00 – **all village residents are welcome**: there is no membership fee, and regular updates are available if you sign up - contact Chris Baldry. Or you can look on the website – due a major update over the next month. Our last meeting was held on Earth Overshoot Day – the day when we start borrowing against the future – it comes earlier every year.

We also have a regular presence at **Coffee Mornings**; and our stall on Recycling and Composting in July, with Craig Renton, the Suffolk Waste Adviser present, was clearly useful. We are following this up with a **Food Savvy event** in the spring. Food Savvy is a national organisation with county branches that targets the unnecessary and widespread waste of edible food. We hope our event will be multi-generational with village residents and school parents (and perhaps children as well) benefitting from Food Savvy's presentation and sharing tips and tweaks for avoiding food waste and how to deal with time and money constraints.

Composting follows logically on from this. As well as promoting home composting through Waldringfield Community Composting, GW is pressing Suffolk County Council for information about when doorstep food waste collection will be rolled out – mandated nationally for 2023, but no sign locally yet. This issue is especially important because 31% of the 'waste' going to 'Energy From Waste' is organic, and yet it generates only 17% of the energy – and would be far better deployed as soil improver or as compost.



Hedge Poems To co-incide with the Coffee Morning stall on Trees—we're inviting villagers to commit to planting more trees in the Autumn and we invited love-letters to your hedge - hedges are after all only lots of small trees together! Here are some of the contributions



Greener Waldringfield



Traffic: now that work is beginning at Brightwell Lakes there are suddenly 40mph sign at regular intervals all the way from the A12 crossroads up to where the road narrows and becomes winding just before entering the village – where suddenly it is de-restricted (ie the national speed limit on smaller roads of 60mph). We know there is also concern, especially among school parents, that there is a 30mph rather than 20mph speed limit on School Road. The Parish Council has long suggested to Suffolk Highways that both on the incoming road and on School Road the speed limits should be reduced. If you agree with this please could you let the Parish Clerk know – or email Councillor Colin Reid – the PC's negotiating arm would be much strengthened with some popular groundswell behind it.

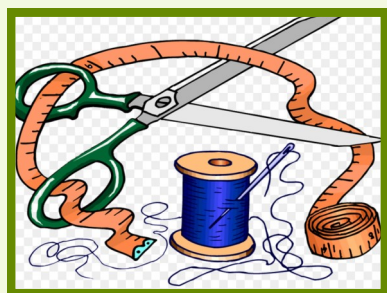
Green Veining and Treezilla: Do commit a bit of your outside space for nature recovery, and map your trees using the Treezilla app. See previous issues or the website for more on this..



<https://treezilla.org>

Tree Wardens: Christine Fisher Kay has been Waldringfield's Tree Warden for more than 20 years – her experience and expertise can't be overstated. GW has now appointed two more volunteer Tree Wardens to help value and protect our local trees and hedges.

Litter Pick / Rubbish Walk : Plastic pollution continues to be in the news - at least we can prevent it getting into soil and water locally by systematically clearing along the roads into the village twice a year: join us on **Thursday 27th October** - meet at the Heath Crossroads at 10.00 am. We have a dozen litter pick tools but please bring your own gloves and high viz.



Keeping things out of landfill or incineration for as long as possible is of course the main focus of **Repair Cafes** – GW runs two per year and our second one is on **October 15th** with a particular focus on textiles and clothes repair, so do reserve that Saturday morning: it's surprising what can be brought back to life! In between our events there are regular Repair Cafes at Martlesham St Michael's church and St John's Church in Woodbridge.

On **Saturday October 1st** 10.00 – 12.30 it's GW's '**Climate Ready Homes**' event. Speakers will be James Mallinder, lead on the environment for East Suffolk Council, Nigel Watson, CEO of Greenscape which also holds the Solar Together contract for Suffolk, and Dr Phil Wallace who will exemplify how he has greened his home with full costings. There will be a Forum with plenty of time for questions. For residents of the village there will be an opportunity to visit, by appointment, Waldringfield homes where significant Energy Efficiency upgrades have been made. We have also applied for use of a thermal imaging camera which we hope to make available to residents so that you can see the heat leakage from your home.

This event will be supported by the East Suffolk Greenprint Forum.



Waldringfield Church Field Trust

As the drought continues the Church Field is looking exceedingly brown, or rather different shades of brown and buff as the different grasses age in their own ways. The trees mostly remain surprisingly green and there are many fruits to be found: hawthorn berries, bird cherries and sloes, blackberries and lots of seeds for the goldfinches and other small birds.



Bird cherry berries



Common Blue butterfly



Gatekeeper butterfly on Buddleia



Very dry field

We have asked for no barbecues at all up there the fire risk is high. One of the picnic tables has had a disposable barbecue placed on it which has left a burnt area. With the tinder dry vegetation and usually a bit of a breeze on Church Field it is really out of the question to use barbecues in any shape or form.

The basketball net has worn out again and a replacement has been bought and will be put up shortly – it must be getting some use! We are going to move the goalpost to an alternative spot to allow the grass to recover. The next work party will be in September, and will be advertised on waldringfielders and on the noticeboards on the field.

Christine Fisher-Kay

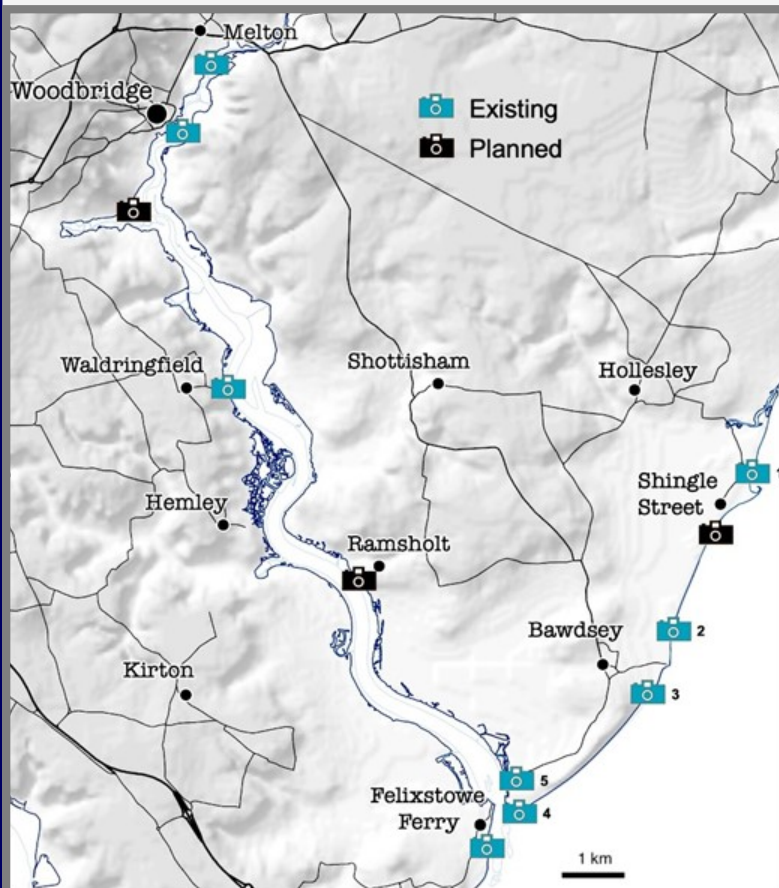
Waldringfield Photo Post

The Waldringfield PhotoPost is part of a wider network of fixed-point photography sites around the Deben estuary and coast (the Deben PhotoPosts project – see below), supporting the monitoring and understanding of coastal change. It is a citizen-science project - everyone can get involved to help capture changes in the coastal environment, all you need to make a contribution is a mobile phone/camera.

The Waldringfield PhotoPost is located north of Waldringfield on the river wall, with a view over the Deben estuary. Instructions on how to use it are on the post. More information and photos already taken can be found at:

<https://www.facebook.com/WaldringfieldPhotoPost>.

Many thanks to Cllr. Sue Quick for liaising on this project, and the trustees of Dairy Farm Marsh for permission to use their land. **Ian Kay (Chair, WPC)**



The Deben PhotoPosts project is a public and community monitoring enterprise involving the Deben Estuary Partnership, Bawdsey Parish Council, and coastal scientist Helene Burningham of UCL. We have been installing PhotoPost sites around the Deben estuary and local coastline to support the monitoring of coastal change and inform decision-making and coastal management. Initial funding for the project was obtained through the Sustainable Development Fund provided by Defra and managed by Suffolk Coast & Heaths AONB.

Fixed-point photography (i.e. taking a photograph of a specific feature from exactly the same position) has been used for decades to monitor environmental change, and there are many examples of similar projects around the UK and beyond.

The Deben PhotoPosts are already capturing aspects of change in the coast that are

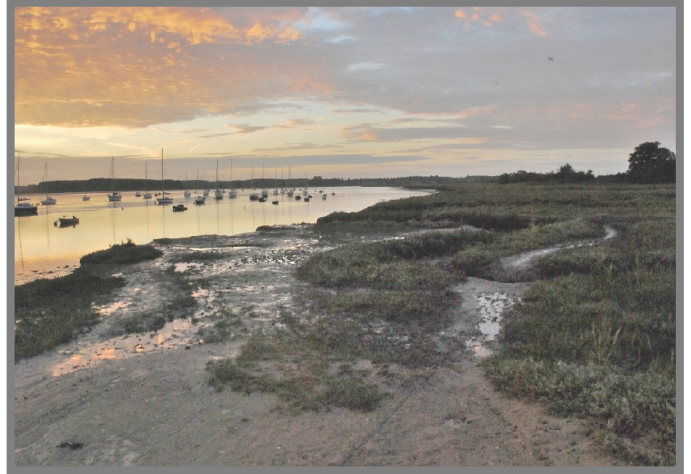
not evident through standard monitoring approaches, and as our archive grows, we are certain that the record will be invaluable in supporting improved understanding and inform flood and coastal erosion risk management. *[Taken from the Deben Photoposts website]*

Protection of the Salt Marshes

A number of villagers have expressed concern about the state of the saltmarsh near the dinghy park. Recently significant numbers of people have been going onto the saltmarsh and using it as an extension of the beach. Some people have been jumping off the salt marsh into the river or the channels that run through the saltmarsh. All this activity is degrading the saltmarsh and exacerbating the erosion of this vulnerable habitat. The photographs (by Chris Videlo and Roger Stollery) illustrate the damage that is taking place.



Salting beyond Parson's Patch—2019



Noticeably more salting damage—2020

The saltmarsh is already being eroded by wave action, tidal flow, shore crabs etc. Research projects are taking place at two sites on the saltmarsh in Waldringfield to discover more about the causes of erosion and to experiment with various ways of trying to regenerate the saltmarsh. So it is important that we don't add to this erosion.

The site near the dinghy park is a Site of Special Scientific Interest and the River Deben is an internationally protected site under the Ramsar Convention on Wetlands of International Importance as Waterfowl Habitat.

The site is owned partly by the Sailing Club and partly by Rosa Waller and we have teamed up to try to prevent further destruction of this valuable habitat. To this end, we have put up two notices asking people to keep off the saltings in the hope that gradually this habitat might be restored.

We ask villagers and users of the beach to join us in this task by observing the signs. We will be speaking to people who either ignore the signs or, as often happens, simply don't notice them and explaining what we're doing and why we're asking them not to go onto the saltmarsh. If anyone else feels able to join us in doing that we would be very grateful.

Rosa Waller & Richard Atkins (WSC Rear Commodore)

Saltmarshes – what they are, why they matter and how all of us can help protect them

The Need for Us to be More Careful

As the above photograph shows the salt marsh to the south of Waldringfield is steadily being converted into an extension of the small beach next to the Sailing Club dinghy park. It is important that we work together in an attempt to halt this degradation.

You may all remember that only seven years ago wooden polder fences were erected to the north of the village to stabilise the saltmarsh there and, in doing so, protect the toe of the improved river wall.

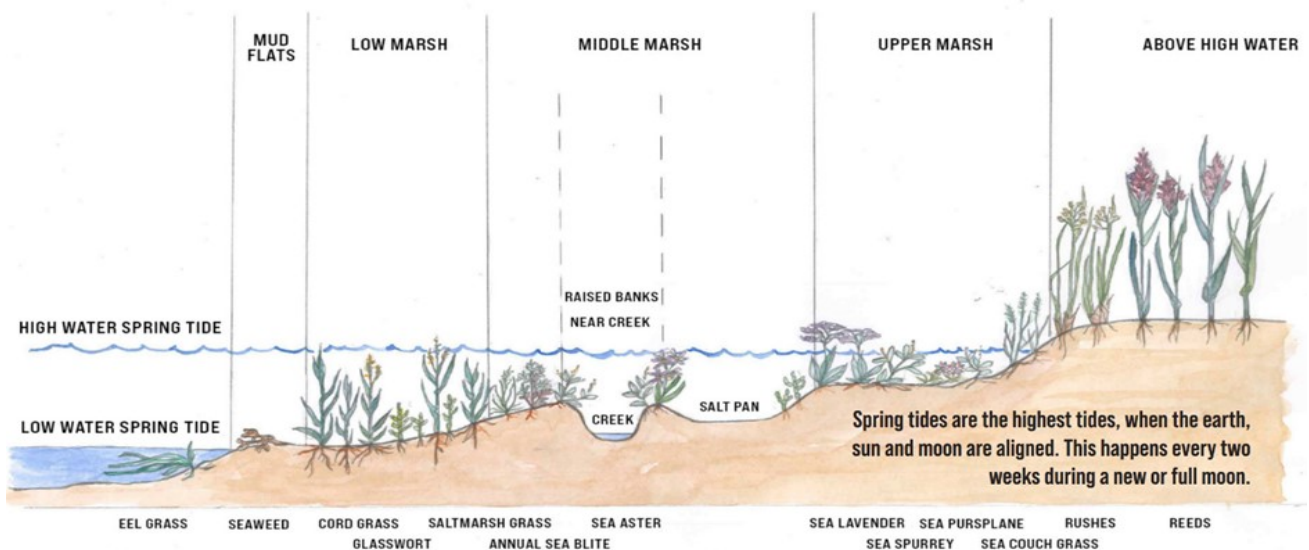
Now, in the area to the south all we need to do is to stop people trampling over the marsh. This is incredibly important because salt marshes are fragile and they can potentially help us mitigate the impact of climate change.



What are salt marshes?

Saltmarshes are so much more than just “the smelly, boggy bit between the river and the shore”. A saltmarsh is a constantly-changing living environment, created by silt (from land or sea or both) settling out in the area between low and high water, held in place by specialist (salt tolerant) vegetation, some of which then rots underwater to provide habitat and food for small creatures, fish, and other marine life.

As the saltmarsh develops progressively, different zones in the saltmarsh system represent the different stages of succession.



(from Chichester Harbour Conservancy: https://www.conservancy.co.uk/assets/files/cms_item/1043/d-Saltmarsh_PDF-

Because saltmarshes are regularly submerged by the tides and contain a lot of decomposing organic material, oxygen levels in the sediment can be extremely low—a condition called anoxia. Bacteria which thrive in these anaerobic conditions produce the sulphurous rotten-egg smell that is often associated with marshes and mudflats.

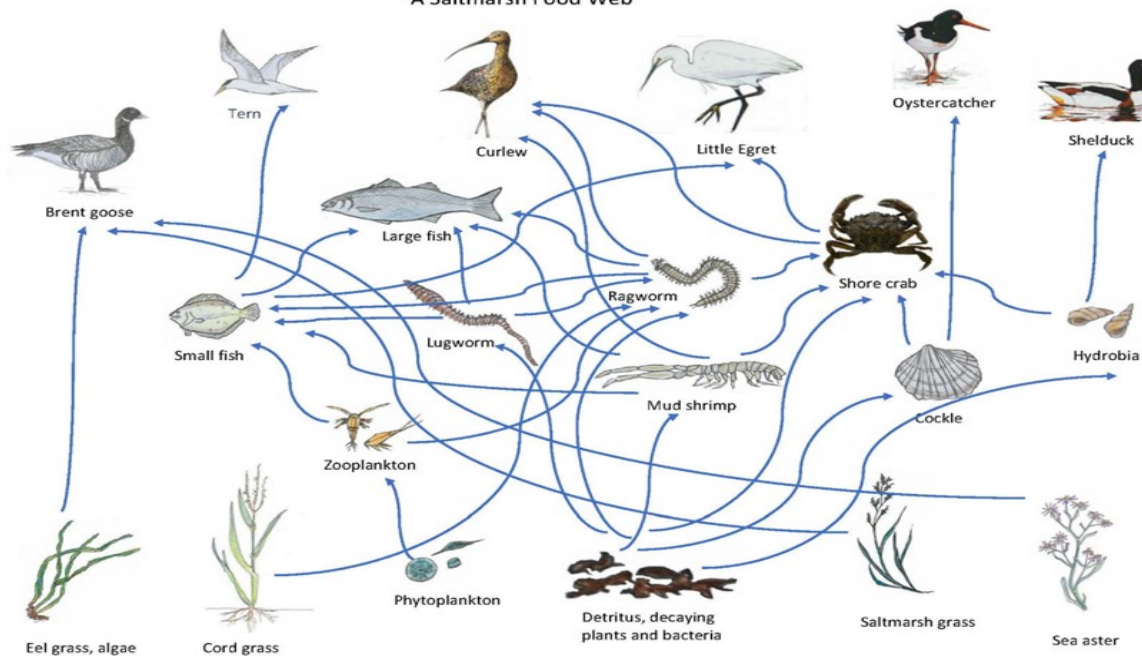
Why do they matter?

As well as reducing the impact of waves on the soft riverbanks, salt marshes help with pollution control, waste disposal, and the maintenance of water quality. Their value is based on the interaction of their basic components (soil, water, flora and fauna), their physical shape (including channels and saltmarsh surface) and the assemblage of plants and animals they hold. Carbon sequestration is an additional newly recognised benefit - recent research shows that the 250 hectare restored saltmarsh at [WWT Steart Marshes](https://www.conservancy.co.uk/assets/files/cms_item/1043/d-Saltmarsh_PDF-) has, over the last four years, captured and buried organic carbon at the rate of over 19 tonnes per hectare per year. This is as much as would be achieved by over one million new trees growing for ten years!

Saltmarshes are an extremely important food resource for breeding and wintering wading birds and wild-fowl. They support internationally important numbers of bird species, as well as providing nursery sites for several species of fish. Many of the plants growing on saltmarshes are not found elsewhere and are adapted to cope in the salty environment. Areas of saltmarsh with high plant diversity are also important for invertebrates.

(from Chichester Harbour Conservancy: https://www.conservancy.co.uk/assets/files/cms_item/1043/d-Saltmarsh_PDF-

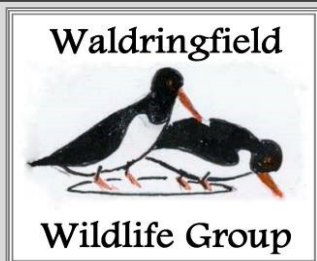
A Saltmarsh Food Web



Illustrations and text by Sue Digby

What we can do to preserve them

Healthy saltmarshes are in dynamic equilibrium and will recover quickly from natural events such as storms and droughts. But saltmarshes can degenerate for a number of reasons, including **land reclamation** (industrial development, waste disposal sites, transport infrastructure), **erosion and coastal squeeze** (being eroded at the seaward edge whilst being prevented from migrating inland by fixed flood defence walls), **changes in sediment dynamics** (often as a result of land claim, coastal defences and dredging), **invasive species** (including hybrid cord-grass *Spartina anglica*, which is often extensively planted to stabilise mudflats as a prelude to land reclamation, often producing extensive monoculture swards of reduced wildlife value), and **changes to grazing practices**. **Pollution** can also be a problem (oil spillages, waste tipping, sewage effluent and agricultural run-off will all alter the flora and fauna of the saltmarsh). But closest to home, we all need to do our bit by not trampling on the saltmarsh and the plants, using raised boardwalks and platforms where available, and minimising our own impact. —**Linda Wilkins, Coordinator Wadringfield Wildlife Group**



Waldringfield Wildlife Group

Hedgehog Activity

The wildlife group would like to hear about any sightings of hedgehogs you may have. There have already been a number of hedgehog sightings in various parts of the village this year. So far as we know there have not been any road deaths but several people have reported hedgehogs visiting their gardens for food and water. If you would like to borrow the footprint tunnel for detecting hedgehogs this can be arranged.



Food must be in short supply at the moment – hedgehogs eat mainly insects, worms and slugs and in the extreme dry weather all are less easy to find. People can help by putting out dishes of water as for birds but at ground level, and food sources such as hedgehog food and kitten food or cat food. Please do not put out milk which causes problems as they cannot digest it. Ideally make a shelter where hedgehogs can feed that is inaccessible to cats. This can be done by making an entrance only 5" wide (125mm) in a plastic storage box or using bricks and a sheet of plywood if you have them. By placing a brick in front of the entrance leaving just a 5" gap cats are deterred from entering .

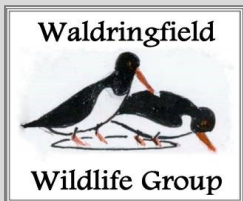
Other ways of helping hedgehogs and lots of interesting advice and videos can be found on Hedgehog Street website. They also have an interactive map where sightings can be recorded.

Please report any sightings to me for our records, see phone number below.

Christine Fisher Kay Tel: 01473-736384, On behalf of Waldringfield Wildlife Group

Here are some views captured on a trail camera in our garden in July.





WWG PROGRAM FOR 2022

October 8th	AGM —An illustrated talk by Cathy Smith of Suffolk Wildlife Trust on 'Gardening for Wildlife' - Membership is £10.00 per annum; new mem-
December 10th	Professor Peter Hobson, Writtle College: A presentation on Reclaiming the Lost Natural Environment - wildlife corridors, responding to climate warming and biodiversity loss, followed by our members bring & share Christmas lunch

All events are at 11am at the Waldringfield Village Hall—fee is £3.00 for non-WWG members,
 Statement Covid safety : Please do not attend if you or a member of your household test positive or are feeling unwell. Use the hand sanitiser at the door. Chairs will be spaced out in this larger venue and will be ventilated, wear warmer clothes. As you will be aware, this virus has not gone away and there is still a risk of passing on infection. So we would ask everyone to act in a way which protects the safety of others, particularly those who still feel vulnerable. For example, we should avoid having too many people close together indoors, and maintain some level of distancing.

Swift update

Swift Migration:

I hope that Waldringfield residents have enjoyed watching our visiting Swifts' flying displays over Waldringfield this summer, in particular, over lower Waldringfield. They are only here in the UK for a short time and most have now left heading back to the Congo and sub equatorial Africa via France, Spain, Morocco and all of West Africa. The illustrated swift migration map obtained from the BTO website is from their swift studies informed by geolocator tracking from 2010 to 2016.

One swift, known as A320 revealed some of the secrets of swift migration. On 22nd June 2012, hot on the heels of the BTO Cuckoo tracking work, for the first time the full migration of a British tagged swift was revealed. Bird A320 was caught at Fowlmere, in Cambridge and fitted with a tiny geolocator weighing 0.65g. A year later the bird was captured and the data downloaded, revealing some interesting surprises. Subsequent birds have shown that most British adult swifts that leave breeding grounds in

July make fairly quick progress down to Africa south of the Sahara by mid August. They then follow insect hatches and swarms around the equator working their way down as far as Malawi and Mozambique by UK winter months. They then start working their way back up to West Africa by March/April with Liberia being a very important staging area attracting huge numbers before they push up into Europe.



Waldringfield Swifts: The first swift observed in Waldringfield was sighted by Peter Maddison on the 4th May 2022. Numbers of swifts increased and by the 16th May swifts were actively prospecting the swift wall mounted nest boxes at Driftwood and others, landing and clinging onto the boxes and putting their head inside after several fantastic flying displays around the area before landing. The second wave of swifts became evident by the 7th June with swift numbers increasing in around lower Waldringfield and similar reports above School Lane and School Rd. After several tantalising days with swifts feeding above and looping around the roof of Driftwood on the 16th June a swift enters the swift box and, shortly after, a pair is seen going into the same box. Sure I heard faint swift calls from inside the box on this and subsequent occasions usually after a swift enters the box. There was a further sighting of a swift entering the same box on the 17th June. Without a camera inside the swift box to observe what was going on I had to rely on watching out to see what was going on. The best times to observe the swifts entering and leaving was about 7.45am and just before dusk at about 9.30pm. Most evenings myself and many other residents enjoyed watching the swifts fantastic aerial display from their gardens or whilst enjoying a beer at the Maybush with swifts feeding up above. They were usually observed swooping across and around lower Cliff Rd where it is reported that a natural nest site was occupied and one of the swift boxes installed last year on the cement cottages was also occupied by a pair of swifts. One of the swift boxes mounted on the gable wall of the primary school was also believed to be occupied.

Last sightings: My last sighting of a swift entering the swift box at Driftwood was on Sunday 7th August at 8.30pm. The skies above Waldringfield by this time were empty of swifts apart from two seen circling feeding high up on the Monday 8th August. So I like to believe that two little swiftlets have successfully fledged from my swift box and are on their way to Africa. Fingers crossed that the breeding pair and others return to the nest site next year along with many others to fill the several nest boxes Waldringfielders have installed over the past two years.

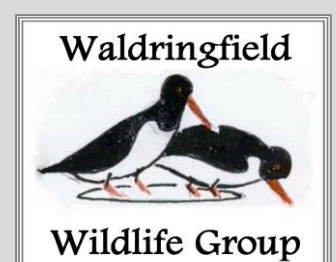
Call Sound Systems: My experience this year confirms that the playing the swift call sound is essential to call the swifts in. My boxes have been installed now since 2019 and this is the first year I have been **total-**ly committed to playing the call system and as far as I am aware it is the first time they have been occupied by swifts.

For further information : www.swiftconservation.com and BTO/org

Linda Wilkins, WWG Coordinator



Photo of grounded swiftlets under the care of Zoe - a trained swift carer in Framlingham





***NEW* Waldringfield Parish Council – email list**

Waldringfield Parish Council are looking for ways to better communicate its work with all residents of the village. Currently we communicate mainly via our website, notice boards, and the village email group, Waldringfielders. We would like to improve on this by creating an email distribution list for all residents who would like to receive Parish Council information directly to their email inbox.

The Clerk will be arranging/maintaining this list. This is a distribution list only and is **not** a community forum. The purpose of the mailing list is only to provide WPC information to residents who have signed up to receive this information by email. This will be in addition to our other communication methods.

By signing up to the mailing list group – you will receive the statutory Parish Council information (such as agendas, meeting notices and any other public communication the Council would normally distribute). We will not use this for any other purpose.

If you are interested in being added to this distribution list, – please contact the Clerk (Jennifer Shone-Tribley) at:

Pc.waldringfield@googlemail.com

Please state in your email you would like to be added to the Parish Council's distribution list.



Waldringfield Village Hall Winter Talks

4th November Michael Gidney FAIRTRADE

Michael is Chief Executive of the Fairtrade Foundation. He has worked in international development for 20 years, with a particular focus on reducing poverty and developing small enterprise by helping producers identify and access markets. This has led him to believe that there is no better model for ending poverty than through enabling fairer trade and that Fairtrade, when it works well, can be transformational.

9th December Alice Reid SECRETS OF THE CENSUS

Alice, who is Professor of Demography at Cambridge, will talk about census taking in the UK over the past two centuries. She will illustrate new insights from historic censuses regarding geographical patterns in family formation, daily lives and social structure, and how these have changed over the long term. (This is the talk that was postponed from January because of Covid.)

Talks begin at 7.30 pm in the Village Hall. Charge £4 including refreshments. Under 18s: free.



**Woodbridge
Choral Society**

Join Us

We would welcome singers in all voice parts
to join our thriving choir.

If you are interested, please come and
join us at our first rehearsal.

Tuesday 6th September at 7.15pm
Kyson School, Woodbridge IP12 4HX

Programme for December Concert

Bernstein Chichester Psalms

Britten Rejoice in the Lamb

Elgar The Snow

Latin American Christmas music and more

Performance: 10th December, St Mary's Church, Woodbridge



For more details and to register, please contact
secretary@woodbridgechoralsociety.org
www.woodbridgechoralsociety.org

Registered charity number 276627



WALDRINGFIELD PANTOMIME

22ND OCTOBER 2022

IN THE VILLAGE HALL

We're back!

The Waldringfield panto is back **for one night only** on
22nd October 2022, in the village hall.

Having been cancelled for the previous two years, our wonderful Waldringfield institution is back with a vengeance. Our brand-new pantomime is entitled "**A Lad In Boots**" and follows the trials and tribulations of a hapless young street urchin in search of a dream. Great fun for all the family with food, laughs and entertainment – with all proceeds going to the Village Hall! Look out for further announcements, and put it in your diary now!





Waldringfield Village Hall Trust Lottery

Thank you to all who have supported the Village Hall Lottery for the forthcoming year and my apologies for taking so long to get the Draws started and now brought up to date. As a result of your support, it has been possible to slightly increase the prize values whilst the contribution the Village Hall funds is also increased. To all new players I shall be confirming your purchase in writing during the next few days advising your number / s. Thank you also to the team of collectors who have been round the village collecting subscriptions during the past few weeks.

It is never too late to join in so if you would like a number or two in the Village Hall Lottery, please do not hesitate to get in contact with me. Don't forget also that more numbers sold means the prize values can be increased and additional funds can be added to the Village Hall coffers.

So to the moment you players have been waiting for, the results of the July and August Draws:

Prize	Prize amount	JULY		AUGUST	
1st	£50	Mr. O Ballam	183	Mr. E Blackmore	59
2nd	£40	Mrs J Stredwick	11	Mrs J Norris	282
3rd	£28	Mr. R May	269	Mr. A Sterry	212
4th	£18	Mr. J Nayler	281	Mrs R Erskine	134
5th	£13	Mr. A Lyon	81	Mr. D W Sharpe	21

Back to normal next and subsequent months with the monthly Draws being conducted at the **Coffee Mornings**.

Thank you again for your support, it is much appreciated.

Nigel King
Promoter, WVHT Lottery
01473 736060
07703 569364



The Value of the Village Hall Volunteers

The resumption of the Village Hall Lottery this week brought home to me the tremendous value of our volunteers. **Nigel King**, Lottery Promoter, and his band of collectors, work tirelessly to collect in subscriptions, to encourage maximum participation and to ensure the lottery's continued smooth running from one year to the next. About 50% of the proceeds go in prize money. With no overheads to speak of bar a small licence fee to the Local Authority, you might reasonably ask what the balance of your lottery money goes towards. The simple answer is maintenance of the Village Hall.

Waldringfield is blessed with a modern village hall that is better appointed and equipped than most, thanks to the hard work and generosity of residents, past and present, and the support of the National Lottery. However, it is now over 20 years old and needs increasing maintenance if it is to be kept to a standard that residents can be proud of. This year we have replaced the rotten sleepers around the front bed with new oak ones, have replanted the bed and are now embarking this month on replacing all the radiators in the Deben Hall and the Kennedy Room. This will be followed by new flooring in the Kennedy Room and a myriad of minor repairs and improvements, inside and out.

Our Bookings Secretary, **Marian Bradley**, works tirelessly to maximise revenue from hiring the hall, and does a sterling job. However, the reality is, given the size of the Hall and the cost of maintenance, that this would not, on its own, normally be sufficient to cover all our expenses. Hence the importance and value of the Village Hall Lottery and the efforts of all our other volunteers who raise funds for the Village Hall, including our much-loved Coffee Team.

Christine Lyon is kindly arranging a fun Quiz Night on Friday 16th September, with proceeds in aid of the Village Hall, and my thanks go to Christine for volunteering to arrange this. Please support it if you can.

Volunteering helps to raise much needed funds to plug what would otherwise be a gap in our finances. It also helps to reduce our costs substantially on what they would be if we had to employ people to do all the jobs that are needed.

So my thanks go out to all our volunteers, and to say, particularly to those who may be new to Waldringfield, if you are able to spare a few hours, your help would be most welcome and volunteering is a great way to get to know your fellow residents.

Finally, a warm welcome to our newest committee member **Nigel Shore**, who is joining us as the new Parish Council representative. Christine Lyon, who was the PC representative, has happily agreed to stay on the committee, and like the rest of us will be up for re-election at the AGM which will be held at 7.30 on Monday 19th September. All are welcome to attend!

Philip Hall, Chairman, Waldringfield Village Hall Trust



WALDRINGFIELD PARISH COUNCIL

I would like to welcome two new members to the Parish council: **Nigel Shore** and **Cathy Couchman**. Nigel has kindly offered to take responsibility for the PC's website and is the new village hall nominated trustee, and Cathy covers emergency planning liaison, the village sign and street furniture and the Felixstowe Partnership. The other responsibilities of councillors can be seen on the website.

Ian Kay (Chair, Waldringfield Parish Council)

Your Parish Councillors:

Ian Kay (Chair)
Janet Elliot (Vice Chair)
Serena Gold—Colin Reid
Colin Archer— Nigel Shore
Sue Quick—Paul Beaumont
Cathy Couchman

To contact the Clerk:

Jennifer Shone-Tribley

Low Farm, Ipswich Road, Waldringfield, IP12 4QU
Telephone: 01473 736475
E-mail: pc.waldringfield@googlemail.com

ALL PARISH COUNCIL MEETINGS ARE OPEN TO THE PUBLIC
and held on the second Tuesday of the month, in the Kennedy Room at the Village Hall—
starting at 7:30pm unless otherwise notified.

Next meeting: 13 September 2022