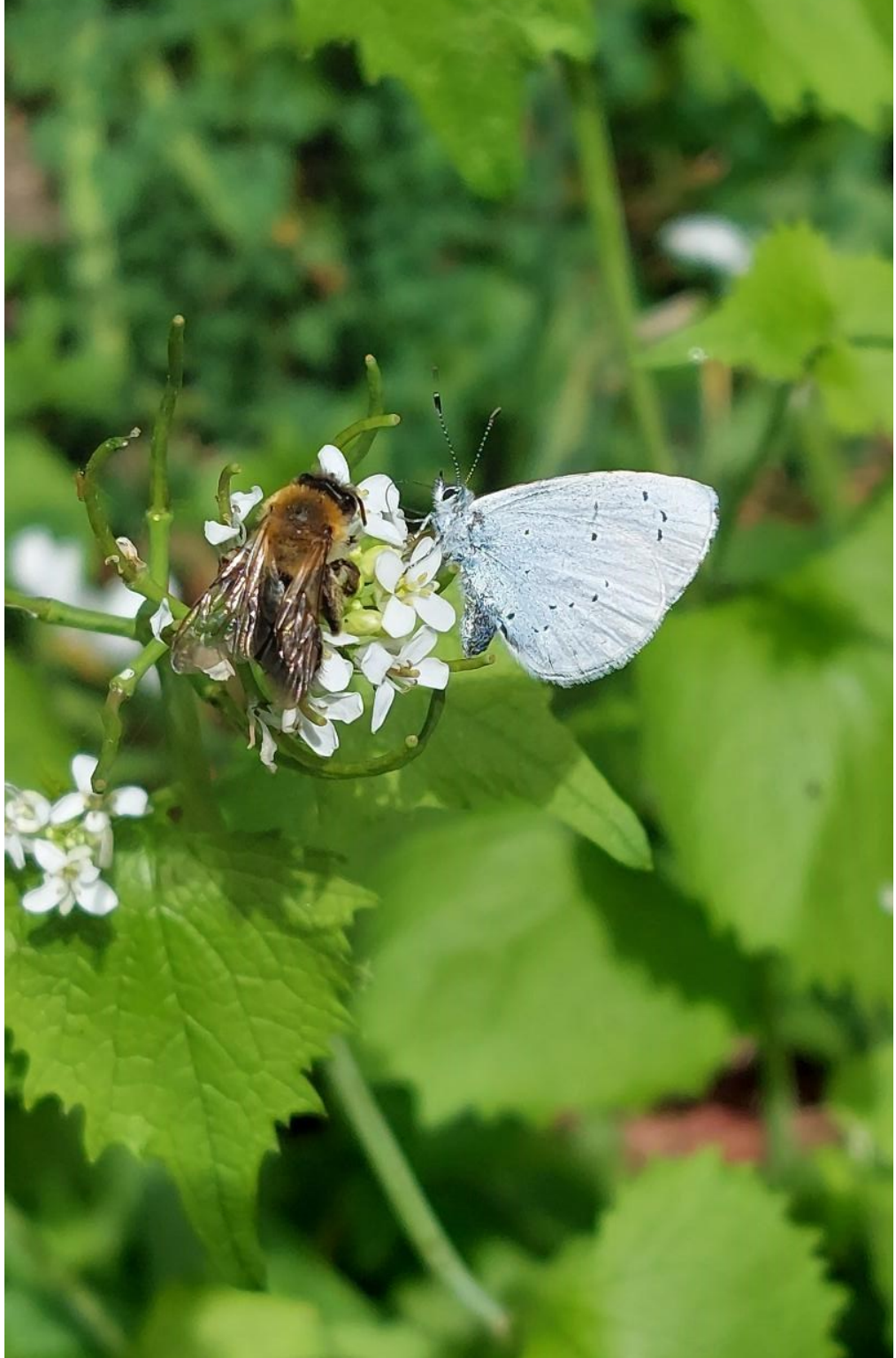




## No.88 —Summer 2025



*Photo—David Fisher Waldringfield visitor*



## Waldringfield Gardeners

All reminder of our programme of events!

***The Community Flower, Vegetable, Produce and Craft Show is on Saturday 9th August***

More information on the show is overleaf. Please contact Alexis Smith — [g1dik@btinternet.com](mailto:g1dik@btinternet.com)

### ***The Pumpkin Parade***

The Autumn half term brings us **the Pumpkin Parade** with the little veg boats floating down the river and a scary story at sundown on the beach. This is an amazing village tradition which has been active for over 15 years now. Date TBC.

### ***Annual AGM***

We have our Annual AGM with mulled cider and a talk on the evening of **19th November 2025**.

### ***Christmas Greenery and Wreath Workshop***

Cheer up your home for Christmas with a seasonal greenery workshop **Sat Nov 29<sup>th</sup>** at the Village Hall  
Details from Alexis: [g1dik@btinternet.com](mailto:g1dik@btinternet.com)



LOW FARM  
COTTAGES & CAMPING

**Do you have guests coming to  
visit this summer**

**Low Farm Cottages** are open all year-round - In Waldringfield!  
We have **five** 1 and 2 bed cottages located at the entrance to the village!  
01473 736475—[www.stayatlowfarm.com](http://www.stayatlowfarm.com)

***We offer a 10% discount to Waldringfield residents!***

Visit our website for photos, availability and  
booking information



WALDRINGFIELD GARDENERS

## FLOWER, VEGETABLE, PRODUCE & CRAFT SHOW

**SATURDAY 9<sup>th</sup> AUGUST 2025**  
WALDRINGFIELD VILLAGE HALL

ENTRIES TO ARRIVE BETWEEN  
11.00am – 12.45pm

ENTRY FEE FOR EXHIBITORS:  
**25p per class. CASH ONLY**

Children's classes 90-92 Free

**Only 1 entry per person, per class**

Children & Grandchildren may enter all the  
classes

\*\*\* Please read the rules \*\*\*

**JUDGING from 1.00pm**  
(Closed to the public)

**\* OPEN TO PUBLIC @ 4.00pm \***  
FREE ADMISSION - REFRESHMENTS  
AVAILABLE

**"The People's Choice"**

*Vote for your favourite entry in the show*

**AUCTION OF PRODUCE**  
5.15pm approx

For entry forms and full list of classes  
email

ALEXIS SMITH—g1dik@btinternet.com

## RULES

This show is open to all 'home grower' residents of Waldringfield, Hemley, Newbourne and their children. Grandchildren of the residents who stay in the 3 villages are also welcome to enter. *Please put **AGE** of child on back of entries 90-92.*

Please use a separate 'entry form' for each person.

### Veg / fruit:

To be displayed on your **OWN WHITE** plates, china or cardboard. ( Except for the longest runner bean & rhubarb).

Please label or mark **your china plates, bread boards and vases** on the **underneath** with your phone number. (In case of loss)

**DO NOT** put your name visibly on any item.

**ALL FOOD** to be **COVERED** with a plastic box, wrap, cling film etc.

### **\* Recipe for 7" Victoria sponge\*:**

6oz flour / sugar / butter, 3 eggs, red jam only - no cream. Only a light dusting of caster sugar on top, no decorations.

### Fruit Cake: **NO nuts.**

Bread to be displayed on **your own bread-board.**

Flowers: to be displayed in your own vase or pot

Herbs: to be displayed in your own small vase or jam pot

Photos: Must be on photographic paper with class number on back.

**Previously exhibited items NOT to be entered.**

*If you do not wish your items to go into the auction please put **'N'** on your entry form beside the class number.*





## Waldringfield Sailing Club

Established 1921

The Club is now in full action for the summer, with regular racing on Saturdays and Wednesday evenings. Many other activities are also taking place, including sail and race training for adults and children and cruising up and down the river. Racing started in March, but with warmer weather more boats have been seen taking part on the water.



The annual Easter Egg Regatta was held in April, with 90 boats entered in eight different classes. There were several visitors from elsewhere taking part, including a team from as far away as Wales. The ILCA (previously known as Laser) Class had an open meeting in April which attracted 36 entries. The Club now owns a fleet of six Firefly dinghies for Team Racing, and these are beginning to be more used and of interest especially to those who want to develop their tactical and rules skills. Meanwhile several of the Cadet sailors have been successful in the selection series for the team to represent Great Britain at the class's world championship, which this year is being held on Lake Lipno in the Czech Republic.



The Waldringfield Regatta is to be held between Friday 27 and Sunday 29 June. There will be the traditional shore events, including the ever popular sandcastle and fancy-dress competitions, along with running, swimming and rowing events. Also, there will be several sailing races for different classes of boat over the weekend. The Sunday will conclude with the Yachtsman's Service at 6.00pm held ashore and afloat, with the parishioners from the Church joining sailors and general public, supported by the Woodbridge Excelsior Band.

Further information about Club activities can be found on the website [www.waldringfieldsc.com](http://www.waldringfieldsc.com), along with details of how to obtain a copy of the Centenary Book, which has over 1100 photos and illustrations relating to the Club's history, and is still available for purchase.

**William Sudell, Club President**

*All Photo—Alexis Smith*



**Waldringfield Parish Council**  
**Councillor Vacancies**  
**We need members of the  
community to join us!**



Waldringfield Parish Council has **2 vacancies** for the role of Councillor, for which all members of the community are welcome to apply. When vacancies arise, Parish Councils may fill the vacancy through the process called Co-option. We are seeking to fill our vacancies through this process.

Parish Councillors are first and foremost members of the local community. We have a wonderful and vibrant village and look to have representation from all areas of the community. The role is varied and enables local people to use their skills and experience to enhance the work undertaken by the Council for the benefit of the community. We do lots of things – so there are lots of opportunities to contribute!

Some of the things the Council does in Waldringfield:

- We provide amenities, such as benches, the village sign and grit bins
- We manage the playing field and its equipment
- We organise community events, such as fetes and the Warm Welcome coffee afternoons
- We produce a quarterly newsletter
- We organise litter picks
- We represent the community to other levels of government on issues such as planning and highways

In terms of time commitment, Councillors are expected to attend the monthly meetings of Council (on the second Tuesday of the month) and some work outside of the meetings.

The Council wishes to invite interested people to contact the Clerk for an information pack, which details eligibility and application requirements. We also encourage applicants to visit [www.beacouncillor.org.uk](http://www.beacouncillor.org.uk) for more information.

**Additional Note:** Successful candidates if co-opted, would serve until the next elections in 2028.

The Council is committed to achieving a balanced composition of Councillors that reflects the Waldringfield community.

If you are interested – please contact the Clerk:

**Jennifer Shone-Tribley - Clerk**

**Post:** Low Farm, Ipswich Road, Waldringfield, Woodbridge IP12 4QU

**e-mail** – [pc.waldringfield@googlemail.com](mailto:pc.waldringfield@googlemail.com) **phone:** 01473 736475

## **Your Parish Councillors:**



Ian Kay (Chair)  
Janet Elliot (Vice Chair)  
Serena Gold  
Colin Reid  
Sue Quick  
Jonathan Ramsay  
Robert Forsdike

*To contact the Clerk:*

**Jennifer Shone-Tribley**

Low Farm, Ipswich Road, Waldringfield, IP12 4QU

Telephone: 01473 736475

E-mail: [pc.waldringfield@googlemail.com](mailto:pc.waldringfield@googlemail.com)

**ALL PARISH COUNCIL MEETINGS ARE OPEN TO THE PUBLIC** and held on the second Tuesday of the month, in the Kennedy Room at the Village Hall—starting at 7:30pm unless otherwise notified.

**Next meetings: 10 June and 08 July 2025**

## **Waldringfield Tennis Court – update**



*Photo: Colin Archer*

The tennis court is in its 25th season, after a total re-construction in 1998. There has been surface erosion and tree root damage in places, causing variable bouncing during play. Moss has also been a problem, and pressure washing to remove it causes further damage to the surface. This was putting people off playing, and numbers have been seriously down over the last couple of years.

The Tennis Court Trust Committee applied to Sport England for a grant, and this was successful, enabling us to re-surface the court and do other improvements. We tendered for quotes from three companies to re-surface the court and fix the tree root problem, and have chosen the best. David Eaton is managing the project.

The court has been closed since the 12th May and will remain closed until about the middle of June. This should not cause any disruption outside the court itself, but please accept our apologies if it does, and of course no-one will be able to use the court during this time.

We are now a member of the Lawn Tennis Association, which gives us various benefits including an online booking system. We are also in contact with a professional coach (Ben Coupe). We intend to buy pickleball equipment which will be available to court users.

When the re-surfacing project is complete and the court is again fit for playing on, we will have a re-launch, which will be announced on Waldringfielders, probably towards the end of June or early July.

***Ian Kay (Chair, Waldringfield Tennis Court Trust)***



# Jenny Riddell-Carpenter

*Member of Parliament for Suffolk Coastal*

## MP'S ADVICE SURGERIES

**As your MP I hold regular advice surgeries across the constituency.**

**If there is anything that I can help you with, please contact me.**

**Details of my upcoming surgery dates and locations can be found on my website.**



[jennyforsuffolkcoastal.org](http://jennyforsuffolkcoastal.org)



Jenny Riddell-Carpenter MP



[jenny4suffolkcoastal](https://www.instagram.com/jenny4suffolkcoastal)



020 7219 7788

**[jenny.riddellcarpenter.mp@parliament.uk](mailto:jenny.riddellcarpenter.mp@parliament.uk)**

New members welcome:  
Annual Membership  
only £10.



# Waldringfield Wildlife Group

Waldringfield Wildlife Group exists to conserve, enhance and record the local wildlife; to protect wildlife habitats and encourage biodiversity; to encourage wildlife-friendly management of land, gardens and public spaces and to encourage a greater interest in the knowledge and love of wildlife in general.

## Meetings & Talks

**are in the Deben Hall at the Village Hall.**

All Talks start at 11.00am unless otherwise stated.

Talks are preceded by Members meetings which start at 10.00am with a Refreshment break at 10.45am.

Admission: Members – No charge. Non-members –£5  
Visitors welcome.

## Field Trips:

Please inform Linda Wilkins or Jill Winter if you are joining any of the field trips/guided tours.

Note: Priority to paid up members for all field trips.



For further details contact:

The Coordinator: Linda Wilkins 01473736044  
mob:07788286482

[linda.thequay@btinternet.com](mailto:linda.thequay@btinternet.com)

Secretary: Jill Winter 01473 736125 [jillwinter2@gmail.com](mailto:jillwinter2@gmail.com)

Treasurer: Alexis Smith 01473 736257 [gldik@btinternet.com](mailto:gldik@btinternet.com)

# PROGRAMME OF EVENTS FOR 2025\*

<b>April 12th</b>	A Brief (un) Natural History of Rivers by Darren Tansley, Wilder Rivers & Protected Species Manager, Essex Wildlife Trust.
<b>April 23rd</b>	10am to 12pm. Guided Walk of SWT Snape Marshes led by Charlie Zakss. Park Snape Maltings Car Park.
<b>May 2nd</b>	Early Morning Nightingale Walk at SWT Newbourne Springs with Peter Maddison followed by alfresco breakfast in Anthea's garden. Meet at The Springs' car park at 6.30am.
<b>May 15th</b>	Early evening Nightingale Walk along the River Wall with Peter Maddison meet 6pm at the Maybush slip way.
<b>June 7th</b>	'Winged Wonders'. Why are insects important and what can we do for them? By Dr Ross Piper. <a href="http://www.rosspiper.net">www.rosspiper.net</a> ; <a href="mailto:AnimalEarth@Dr.RossPiper">AnimalEarth@Dr.RossPiper</a> ; Flickr Photostream.
<b>June 16th</b>	10am to 12pm Herbal identification Hedgerow event with herbalist Rachel Bescoby at Church Field followed by herbal tea making.
<b>June/July tbc</b>	Moth trap opening in Anthea's garden, Newbourne with Sandra and Tony Fix.
<b>July 2nd</b>	RSPB Snape Nature Reserve guided walk with Dave Thurlow, Warden, South Suffolk Coast reserves. Meet at 10.00am.
<b>July 22nd</b>	Butterfly Count at Church Field with Peter Maddison 11.30am followed by Members 'bring and share' picnic at 12.30pm.
<b>October 11th</b>	AGM followed by Saltmarsh Conservation and Sea Grass Mapping by Dr Tim Gardiner, Biodiversity Officer, Environment Agency.
<b>December 13th</b>	Local Nature Recovery Strategy (LNRS) and Biodiversity Strategies in Suffolk by Jen Burlingham, Norfolk & Suffolk Nature Recovery Partnership Manager, SCC. Followed by Members Bring and Share Christmas Lunch.

*\*Updated February 13th 2025*



## **Waldringfield Beach: Memories of the Tideline**

We are pleased to invite you to a programme of events to celebrate the pride of place the village of Waldringfield holds for its waterfront and to explore together the concerns and actions taken for its continued wellbeing.

This inclusive project will be an opportunity to reflect on the rich diversity of how each of us know and value our landscape, the focus of which will be a weekend-long celebration on **30th/31st August at Waldringfield Village Hall** when you will be welcome to join us to view displays and participate in talks, walks and presentations.

There will be some additional events on the waterfront over the coming months including:

**Tuesday 10th June**  
**walk to explore a transitional landscape at Hemley,**  
**&**  
**Saturday 19th July**  
**sketching on the beach with Claudia Myatt.**

If you would like to know more or how to get involved, please contact:

**[memoriesofthetideline@gmail.com](mailto:memoriesofthetideline@gmail.com)**

# Waldringfield Beach

memories of the tideline  
of the tideline  
the tideline  
tideline



In partnership with Church Field Trust and Suffolk Wildlife Trust



Suffolk  
Wildlife Trust

# Wild for Wildlife

Let's get active with Waldringfield Wildlife Explorers

Join us for more fun, learning activities about wildlife, at this event for children and their families, who have a connection to Waldringfield.

## Making Homes for Nature

on

**Wednesday 28th August 2025**

at Church Field, Mill Road, Waldringfield IP12 4PY

10.30 am to 12.00 pm



**Help the Suffolk Wildlife Trust FOREST SCHOOL TEAM build a new homes for Birds, Bats, Bees and Ladybirds. Nature crafts and trails to explore.**

- Dress for the weather and be prepared to get your hands dirty.
- Activities are aimed at primary aged children but younger and older siblings are welcome.
- All children will need supervision from their Adult.
- Although this is a dog friendly space, please do not bring dogs to this event.
- If you have any additional needs, please do let us know beforehand so we can accommodate all children.
- Limited Parking available: There is a small car park but we would welcome walkers and cyclists.
- Families can bring a picnic lunch to have after the event if they wish.

**No charge but a donation of £2 for each child on the day will help to cover our costs.**

**PLACES ARE LIMITED AND BOOKING IS REQUIRED.**

To book your place contact: Sarah Griffiths on 07908 246957  
sarah\_jane\_kerr@hotmail.com.

This event is supported by the Community and Conservation Fund.



## Waldringfield



## Wildlife Group

### WALDRINGFIELD WILDLIFE GROUP

#### Wild For Wildlife. Waldringfield Wildlife Explorers.

**Making Homes for Nature** with The Suffolk Wildlife Trust Forest School Team, Waldringfield Wildlife Group and the Children and Families who have connections to Waldringfield.

#### **Supported by the National Landscapes Community and Conservation Grant.**

After the success of last year's two Wild for Wildlife Events held in Church Field a further three events are planned for 2025 which again involves the Suffolk Wildlife Trust Forest School Team, led by Charlie Zakss, Engagement Officer and her volunteers who coordinate the wildlife activities at each event for children and families.

The theme for this year is '**Making Homes for Nature.**' The focus of these events is to teach our children, involving their families about conserving the beautiful landscapes in which we live. We intend to be active, encouraging families to learn about the environment and to do what they can in their home, gardens and public spaces to encourage wildlife and to preserve our eco systems. We also hope to inspire children to enjoy being in nature. We also aim to have fun!



**Suffolk & Essex  
Coast & Heaths  
National  
Landscape**

A grant from National Landscapes Community and ~Conservation Fund was crucial in establishing the Wild for Wildlife events and the Waldringfield Wildlife Explorers. We plan to be as financially sustainable as possible, encouraging donations for events and using local expertise and resources at minimal cost.



*Photo: Al Gurr*

The first event was on the 9<sup>th</sup> of April 2025 and involved the children in building Stag Beetle Stacks on Church Field. You may have spotted them by now as three were built in one morning's energetic and enthusiastic activity. Thirty primary school aged children attended along with their younger toddler siblings who were able to dig holes to bury the wood piles, using the smaller spades provided. Keen to make sure the wood piles were not mistaken as potential firewood, several signs were painted to inform people about the importance of these homes for Stag Beetles.

#### **Stag Beetles:**

You can find more information about stag beetles by logging onto Suffolk Wildlife Trust site and The People's Trust for Endangered Species. The children learnt that the stag beetle is increasingly under pressure from the loss of their habitat such as dead and decaying wood meaning that private gardens and community green spaces are becoming even more important as safe havens for wildlife. Even though we live in the 'countryside' habitat, wildlife has diminished drastically over the past three/four decades.



*Photo: Al Gurr*



**Suffolk  
Wildlife Trust**

Although, still familiar in the south of Suffolk the species is now a priority Biodiversity Action Plan Species, and it is feared the beetle may soon become extinct.

Church Field was a perfect place to build the stag beetle stacks. We would like to thank Church Field Trust for their support with these activities and a special thanks to Christine Fisher Kay for giving her time and helping to locate the wood supplies and to John Naylor and Mariah Ballam who supplied the wood delivered and cut to the different sizes specified.



Photo: PTES (Peoples Trust for Endangered Species)

We are so fortunate to have this wildlife resources here in the centre of the village with the scenic views of the River Deben.

The children also learnt that that the best wood to use are logs from broad leaf trees such as oak and beech, not coniferous, as they support the richest community of invertebrates. Partially burying logs in the soil is preferable because it will retain more moisture and increase the number of visiting insects. The natural habitat for stag beetles is a tree stump left in situ so it's a good idea to avoid grinding away where possible.



Photo: Linda Wilkins

The children learnt about the life cycle of stag beetles. The female lays her eggs in decaying wood and the larvae that develop are large white grubs with orange heads that can be found in rotting wood at or below ground level. It can take 3-7 years for the stag beetle's larvae to develop into adults. They live as adults for only a few months in the summer to mate and you are most likely to see a male in flight on warm summer evenings between May and August while it is searching for its mate.

#### **Future Wild for Wildlife Events in 2025:**

Continuing with the Theme "Making Homes for Nature" the next two events are on Wednesday 28<sup>th</sup> August and 29<sup>th</sup> October during half term week. See poster for full details of the activities planned for August 2025.

Contact: Sarah Griffiths to reserve a place contact [sara\\_jane\\_kerr@hotmail.com](mailto:sara_jane_kerr@hotmail.com)

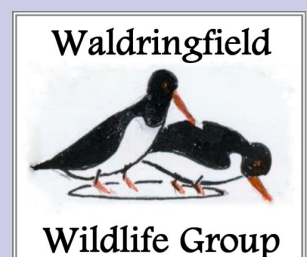


Photo: Charlie Zakss Suffolk Wildlife Trust

**Many thanks to everyone involved** in helping to make this happen, significantly the Children and their Families, National Landscapes, Church Field Trust, Waldringfield Wildlife Group and The Suffolk Wildlife Trust. To Sarah Griffiths for coordination and communication with the families, Simon Couchman for the poster design and making the main sign with posts, Kerry Gurr, a WWG volunteer helping on the day, Andy Chilvers for providing the wooden signs and to Sue Quick from Greener Waldringfield who assisted Sarah and I with the grant funding application.

**Linda Wilkins**

**Coordinator Waldringfield Wildlife Group**





## Waldringfield History Group

The work of Waldringfield History Group continues. By the time this is read we will have presented our talk on Lost Trades of the Village, which has occupied the members over the winter. I wonder what we will be focusing on over the next year.

Work is also continuing with helping Simon Reed and his project on re-searching the river, & marsh to unlock the history to best protect it for the future.

We are also involved with the Beach Tideline Exhibition, in connection with this project, being organised by Sue Quick. "Memories of the Tideline", will be the culmination of a summer of events and will be held on 30/31<sup>st</sup> August at the Village Hall. The Summer events will include the Salt marsh monitoring, and geographical explorations. Photographs through the ages of the river and beach will all add to this.

The Group have recently been contacted by a lady whose forebears lived at Hemley Hall during the 18<sup>th</sup> Century. She had stayed in the village to try and find graves at Hemley Church and see the Hall. She was very interesting to talk to & Caroline and Alyson were able to help her.

We meet from September to March in the Kennedy Room at the Village Hall usually on the 2<sup>nd</sup> Thursday of the month at 2.00 p.m. Our next meeting will be **11 September 2025**.

Our Website [www.Waldringfieldia.com](http://www.Waldringfieldia.com), contains much of our research although some is only available to members. For more information please contact Hon Sec: Margaret Lake or Chair: Alyson Videlo [waldringfieldhg@gmail.com](mailto:waldringfieldhg@gmail.com)

## Swifts and Insects

Swifts have returned to Waldringfield earlier than last year years and in relatively good numbers. We have sightings of Swifts returning to swift boxes they have used in previous years or investigated as three-year-old juveniles searching for a future nest site. So, it's very important from now on through to end July to switch on your call sound systems to help lure them to your swift box. Local experience and feedback from Save Our Suffolk Swifts indicate that this works but you may have to be patient. Having a clear line of access is also important.



*Photo: by Chris Courtney*



*Photo Andrew Moon*

It is so very exciting to see from early morning through to dusk swifts' fast flying displays as they loop in tightly curved angles around lower Waldringfield. It's a wonderful way to enjoy early breakfast in the sunshine just wondering about these awe-inspiring birds intent on mating and feeding after their long journey from Equatorial and Southern Africa.

They commute 14, 000 miles and they do it fast travelling at 70 mph reaching their UK destination in about four weeks. Even their stay in the UK is a speedy one staying long enough to breed arriving from May and staying until mid-July.

Swifts rarely stop flying. The only time swifts land after fledging is at their own nest to feed their chicks when they themselves have bred three years later. Other than this, swifts eat, mate, gather nest material and even sleep on the wing. Its thought they do this by switching off one half of their brain during unihemispheric slow wave sleep (USWS) so one half can rest while the other half stays active.



*Photo Bill Baston*

### **What's Special about Swifts?**

Swifts are the fastest of all birds on level flight clocking up 69.3 mph. At their peak Swifts have a particular display which has a technical term called 'a social screaming' when swifts whirl and fizz in repeat centrifugal circuits at anything between 28 mph and 72 mph. They could be one of the oldest of our bird species part of an ancient group called Apodidae. A crucial indication of this is the nightmarish looking parasite unique to all common swifts called the louse fly which is thought to have evolved with the bird itself.

### **Swift Decline: Food and Nest Sites:**

Swift numbers have declined by 65% in 25 years. This is because they have fewer places to breed and significantly LESS FOOD. There is an issue with their sole food source: **Insects**. Swifts eat as many as 100,000 insects a day. They can collect as many as 1,000 insects in a single bolus (ball of insects) that they carry back to their nest to feed their chicks. Swifts primarily feed on aerial plankton like flying ants, aphids and mosquitoes. It's a huge energy requirement and with insects declining at a faster rate than ever before, many swifts cannot find enough food to sustain themselves.

### **So, what can we do?**

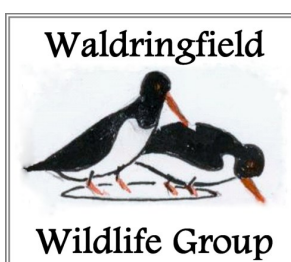
Plant an Insect friendly garden that encourages flying insects for swifts to eat. You will also find that your garden will feel more alive humming with wildlife for you to enjoy:

Go chemical free in your garden and avoid putting down pesticides to let insects that swifts eat thrive.

Leave existing or potential swift nesting places undisturbed. Internal nest places, like those under your eaves or in crevices in your walls are long lasting and will be used again and again by the same swift. If you are re-roofing, make new nest holes as similar to the old ones as possible or fit in swift bricks and install swift boxes.

Find out more about why Insects are so important and what we can do for them by coming along to: An Illustrated talk by Dr Ross Piper titled Winged Wonders on the 7<sup>th</sup> June 2025, at Waldringfield Village Hall doors open 10.45am. See Poster for full details.

**Linda Wilkins, Coordinator Waldringfield Wildlife Group**



**SOS  
SWIFTS**



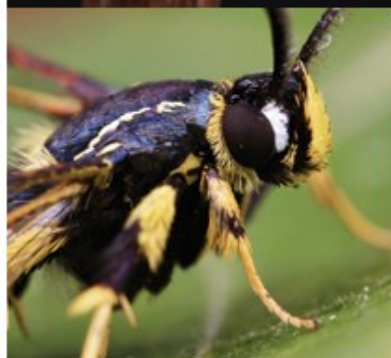
Waldringfield Wildlife Group presents

# Winged Wonders:

## Why are Insects so important and what can we do for them?

An illustrated talk by **Dr Ross Piper**

**7<sup>th</sup>  
June**



## Saturday 7th June 2025

at **Waldringfield Village Hall**

School Rd, Waldringfield IP12 4QP

**Doors open at 10.45am for 11.00am start**

Admission: Non-members – £5.00 includes refreshments  
(cash payment preferred). No charge for paid up members.

Dr Ross Piper is a entomologist and zoologist whose work has taken him around the world. Through his writing and TV work he shares his enthusiasm for the remarkable diversity of the other animals we share this planet with. The most recent species he has discovered is named after his young daughter, although she was rather underwhelmed.

He'll have copies of his last book, *How to Read an Insect*, to sell.

His next book is out in September.

All enquiries to Linda Wilkins on 07788286482 email: [Linda.thequay@btinternet.com](mailto:Linda.thequay@btinternet.com)

**The talk is preceded by a members meeting at 10.00 am**

# Pixel Perfect Photography

At The Boatyard Gallery & Studio  
Waldringfield

For all your photography needs

High Resolution Scanning & Photo Repair  
Slides & Negatives To Digital Transfer  
Your Own Pictures Printed From USB Stick  
Fine Art Photography For Sale  
Portrait & Headshots  
1To1 & Group Photography Workshops  
Computers Built To Your Specification

For More Info :

Email : [info@pixelperfectphotographyltd.co.uk](mailto:info@pixelperfectphotographyltd.co.uk)

Phone : 07956329982

Call In For A Chat

## MARTLESHAM HEATH SURGERY – PPG NEWS

The Martlesham Surgery PPG recently met and discussed with the Practice Manager a number of items.

The first of these being that some works will commence this year to reconfigure the surgery to improve the services available for patients. Firm dates for the works are yet to be confirmed. Whilst there will be some potential disruption caused by the work, the surgery will remain fully open.

There have also been a number of staff changes, resulting in more clinicians being available to patients. As part of the surgery being a Training Practice we are now seeing the benefit of having a range of extra clinicians being available.

Currently this includes an additional two female GPs who are working on rotation between both Martlesham Heath and Kesgrave. Also, we currently have two male Registrars working at the surgery.

On another note, The Birches Medical Centre in Kesgrave has been rebranded as Embrace Medical Centre since the beginning of April 2025. Martlesham Heath Surgery and Embrace Medical Centre remain jointly owned by the Partners of both practices.

If you are interested in finding out more about the either PPG or are interested in joining please either email me at [MartPPG@gmx.com](mailto:MartPPG@gmx.com) or drop a note (with your name & contact details) into your surgery reception in an envelope marked for my attention (Tony Willmott, PPG Chair).

**Tony Willmott - Chair, Martlesham Heath Surgery PPG**

## Waldringfield Church Field Trust

There has been plenty of activity at Church Field with the young Wildlife Explorers building stag beetle piles in April, aided by parents, volunteers from Waldringfield Wildlife Group and the Suffolk Wildlife Trust 's Charlie Zakss who led a very enjoyable morning session attended by over 20 children with parents. The next events will be happening shortly. After construction of the stag beetle fortresses, they were visited more recently by Forest School from Waldringfield Primary and the methods and reasons for doing this were explained by two of the children who took part in the building of the pyramids, well done Harry and Layla . Basically the wood buried in the ground provides food and shelter specifically for the endangered stag beetles, which we are lucky to have in Suffolk but are only found in limited areas of the country. The dramatic stag beetles are most impressive but these timber pyramids are likely to be homes for many other species too. Thanks to John Nayler for supplying the wood.

**Christine Fisher-Kay, Church Field Trust**



*Harry and Layla explain the stag beetle pyramids at Forest School—  
photo: Sarah Griffiths*

# A Tree Warden Writes



We have just had National Hedgerow Week as organised by the Tree Council and partners, and there have been interesting presentations and discussions to view online about hedge management, benefits of and problems, many of which can still be seen on Youtube.

Megan Gimber of PTES (Peoples Trust for Endangered Species) emphasised the importance of the margins alongside hedges and the tussocky grass

associated with them. These are important for many species including butterflies such as Ringlet and Meadow Brown. There are thousands of other tiny species and not so tiny which most of us have never heard of but which form part of the complex web of life. Herbaceous margins with many different plants alongside and under the hedges are where most of the wildlife will be hiding in winter when native hedges are frequently bare of foliage. However not all, as ivy in the hedge is an important hibernation area for other species such as the Brimstone butterflies we see early in the year and the Holly Blue butterfly (see photo front cover).

The width of hedges is important, they are often kept narrow, but if allowed to grow to 3 or more metres wide become a much more useful resource. They do not have to be cut every year which can have the effect of removing all the flowers and potential fruit. They can just be cut on one side in alternate years to allow some of the development which also benefits the land in many ways. In farmland the hedges can provide shelter for livestock and for crops. The loss of soil due to erosion by the strong winds we are seeing more of and the heavy rainfall episodes due to changing weather patterns can be alleviated by sufficiently robust hedges in the right places.

Megan suggested instead of planting 2 rows of hedging as is usual perhaps we should plant 3, 4 or 5. I have many hedging plants growing on waiting to go out in the autumn so maybe we will be able to plant some of these wide hedges for the future. Anyone with space for a hedge is welcome to get in touch. These hedges will contain a rich variety of native species which will help our wildlife.

Jack by the Hedge (r), is a food plant of the orange tip butterfly. Part of the wild flora which flourish under hedges if allowed! This applies to garden hedges as much as farm hedges. If you look closely at a flower head you may see the tiny orange eggs laid by the butterfly attached to the base of individual flowers.

**Christine Fisher, Tree Warden Waldringfield**

**01473-736384 for free trees**



## **District and Borough Councils' clear message to communities: "Let's shape the future of Suffolk together!"**

### **Suffolk's five district and borough councils are launching a county-wide survey asking people for their views on the future of vital local government services**

The move comes as part of the government's Local Government Reorganisation (LGR) initiative which would see county, district and borough councils replaced and all their services delivered by one or more new unitary councils covering a specific area in the county.

District and borough councils believe that Suffolk would be best served by more than one unitary council. They have submitted their interim report, which sets out the benefits of a multi-unitary model. In a letter sent earlier this month to all Suffolk councils, the government offered clear encouragement for the districts and boroughs to continue developing their proposals.

With this in mind, they are now seeking to further develop the best possible case for a multiple unitary solution in Suffolk, creating councils that are big enough to deliver, but local enough to care; councils that will be efficient and financially sustainable, delivering genuine value for money.

This is the most dramatic change to local government in 50 years, and the Leaders of the borough and district councils are committed to ensuring that every community is involved in shaping the new councils and their services.

As part of the wider engagement work the district and borough councils are carrying out, residents, businesses, community groups and other organisations can now have their say on what is important to them, in the areas in which they live and work.

Encouraging as many Suffolk people as possible to take part, the Leaders of the five district and borough councils, Cllr John Ward, leader of Babergh District Council, Cllr Caroline Topping, leader of East Suffolk Council, Cllr Neil MacDonald, leader of Ipswich Borough Council, Cllr Andy Mellen, leader of Mid Suffolk District Council, and Cllr Cliff Waterman, Leader of West Suffolk Council, said:

"We want to transform public services, so they work for all our citizens and communities, and we want you to help us shape them.

"Suffolk County Council has only one plan – to create a single mega-council, which we believe would be out of touch with communities and residents. It would cover a vast geographical area seeking to save as much money as possible, no matter how perilous the impact on local democracy, the quality of services provided or proper accountability where you live - whether it's Hadleigh, Sudbury, Bury St Edmunds, Stowmarket, Felixstowe, Lowestoft or Ipswich.

“We can’t let that happen and we want to hear what you think, to understand the challenges and opportunities, and to ensure that all of Suffolk is listened to and properly represented in the generational changes which are taking place.

“We are absolutely certain that a multiple unitary model, with each new council delivering all services to different, recognisable parts of Suffolk, is vital to meet the differing needs of our diverse communities.

“With this in mind, we are greatly encouraged by the government’s recent feedback which makes it absolutely clear that we can make a case for local unitaries focused on meeting the needs of all our communities, embodying a true sense of place and local identity. It also supports our argument to have greater representation in the Mayoral Strategic Authority to ensure local voices are heard from across Suffolk.

“Creating more than one unitary council in Suffolk will ensure strong local leadership and democratic representation, better community engagement, neighbourhood empowerment and more responsive councils. We want more locally targeted, modern and flexible services, to drive better outcomes and value, rather than a basic and unimaginative ‘one size fits all’ option which simply bolts district and borough services on to an old and tired county council system.

“This is a fantastic opportunity to work with communities, service users and organisations to rewire how services are delivered and drive better outcomes to meet local needs. For example, the needs and challenges for people living in Ipswich are different to those in rural Suffolk. For the first time your council will be able to deliver services tailored to meet local needs when previously it was a one size fits all approach that only worked for the few.

“It’s particularly important that we can make a strong financial case for change – not only highlighting how we can deliver savings in the short and medium term, but how we can absolutely guarantee the future sustainability of the services people depend on.”

Issued on behalf of: Babergh District Council; East Suffolk Council; Ipswich Borough Council; Mid Suffolk District Council and West Suffolk Council

***The survey, which closes on 25 July 2025, can be found at***

**[www.babergh.gov.uk/devolution-and-lgr](http://www.babergh.gov.uk/devolution-and-lgr)**



# Let's shape the future of Suffolk together



# News from Waldringfield

## All Saints Church



View from the bottom of the churchyard in early May

**Thank you to everyone that came to the Auction of Promises event on Saturday 3rd May.**

There were over 50 Lots to get through on the night. Auctioneer Nigel King did a sterling job of keeping the proceedings moving, and by the close of the auction, it

was estimated that over £4000 had been raised. Absolutely Brilliant! Thanks to the generosity of those who offered “promises” and those who bid, we have made a great contribution towards funding some of the necessary building repairs of the church.

Some of you might have spotted these characters on posters around the village at the end of April. 28 people have already signed up to the challenge to become ***The Champion Potato Grower of Waldringfield 2025.***

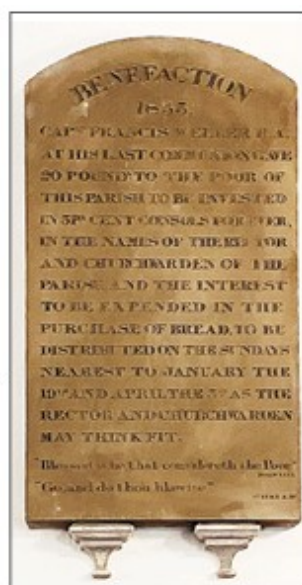


Good luck to all who have entered. I believe judging will take place around about the same time as the Village Produce Show. For further information contact Bridget Dearlove or Anne Parkinson.

Can anyone shed any light on what became of the annual distribution of Bread to the poor on the Sundays nearest to 19th January and 3rd April?

This Plaque dated 1853, inside the Church, describes an investment of £20, in 3 percent consols forever, presumably to pay for the bread?

If you know anything about this Benefaction to the Parish please get in touch with the Parochial Church council.



### Church Services

#### *Prayer Services*

Occuring every first Sunday of the month at 10.00 a.m.

#### *Holy Communion*

Occuring every third Sunday of the month at 10.30 a.m.

For further information go to: <https://www.achurchnearyou.com/church/2027/>



### **Waldringfield Village Hall Trust**

June 1st is the last draw in the current round of the Village Hall Lottery - it will actually be made at the June Coffee Morning on June 5th. This means that July 1st is the first draw of the new lottery year. This also means that your subscription will be due during June for the new year. The Collectors will be calling any time from now on - no changes, £1 per number per month = £12 per number for the year.

Payment can be made in various ways :

- 1) Cash to the Collector or through my letter box (please indicate clearly who you are !!)
- 2) Cheque payable to WVHT given to the Collector or through my letter box.
- 3) BACS to : Lloyds Bank; sort code: 30 - 99 - 85; Account 00685574, name on account: Waldringfield Village Hall Trust; reference 'lottery'
- 4) Initiate a Standing Order - value date annually June 30th

A number of you already have S. O. in place, thank you, so sit back and relax !!

To all existing participants, many thanks for your support - it is much appreciated and enables the lottery to make a valuable contribution to the village hall funds.

**To new residents** - welcome to Waldringfield but you may be wondering what this is all about !! ? This lottery makes a valuable contribution to the village hall funds, about £1,750. The hall is owned by the village and the running of it is administered by the Waldringfield Village Hall Trust and its Trustees. The upkeep, maintenance, improvements and capital projects have to be financed by hall lettings and fund raising events - of which the lottery is one. I have mentioned the approximate amount of money generated by the lottery and you will understand how important its contribution is.

As well as being part of the group of participants making this net contribution to the hall funds, you have a chance to win prizes ! Each number costs £1 per month - £12 for the lottery year, there is no limit to how many numbers you have ! We collect a full year's subscription of £12 per number during May / June and the payment methods are shown above. The lottery year is July 1st to June 30th with a draw monthly, usually made at the Coffee Morning held in the hall on the first Thursday of the month.

I mentioned prizes ! Around 50% of the money for sold numbers is returned as prizes and currently the monthly prizes are :

1st prize £50; 2nd prize £40; 3rd prize £28; 4th prize £18; 5th prize £13

If you don't wish to play in a lottery, some villagers make a donation to village hall funds of at least the value of one number, for which we are most grateful - 'Every little helps' !! I shall say no more - any questions or for further information please do not hesitate to contact me by email [ngking@btinternet.com](mailto:ngking@btinternet.com); or by phone (numbers below) or knock on my door—'Killick'. Cliff Road, Waldringfield, IP12 4QL

***Nigel King; Promoter, WVHT Lottery***

***01473 736060 or 07703 569364***



# THE GAS SHOP

## FELIXSTOWE

### We now install, service and repair OIL BOILERS!

You can expect our usual first class,  
industry-leading service.

Including, but not limited to:

- Over 35 years' extensive heating experience
- Office open 6 days a week, phones usually answered within 3 rings
- 24/7 emergency call out for our regular customers
- Fully trained technicians
- Includes new nozzle every service

**Servicing cost just: £195 inc. VAT**

Give us a call today on **01394 670903** to book your service

[www.thegasshop.co.uk](http://www.thegasshop.co.uk)



I'm Recyclable! Please place me in the blue recycling bin when you're done reading me