

Parish Council report for the Waldringfield Annual Parish Meeting April 2016



Waldringfield PC report, April 2016

Members of the Parish Council:

Ian Kay	Chairman/Parish Liaison/WALGA/Notice Board - Waldringfield Heath
Alyson Videlo	Vice Chair/Website/Community Policing (<i>ad hoc local meetings only</i>)
Frances Matheson	Fairway Committee/Planning
Colin Archer	Tennis Court/Playing Field/Notice Board - Cliff Rd
Serena Gold	Footpaths/Fairway Committee/Church Field Trust/Planning
Toby Harraway	Village Safety Group
Colin Reid	Playing Field
Janet Elliot	Parish Plan coordinator/Church Field Trust/Planning
Neil Winship	Emergency Planning Officer/Flood Warden liaison/SALC (<i>E. Area only</i>)
David Lines	Clerk & RFO/SALC/Website

Parish Council Appointees:

Christine Fisher-Kay	Tree Warden
John Smith	Flood warden
Tony Lyon	Deputy Flood Warden
Ged Morgan	Deputy Flood Warden

Non-Parish Council Responsibilities:

Alyson Videlo	Neighbourhood Watch
---------------	---------------------

Waldringfield PC report, April 2016

Parish Council Elections

Parish council elections were to be held on 7th May 2015.

However, for Waldringfield Parish there were only 8 contenders for 9 seats, so they were all elected unopposed:

Archer, Colin Michael
Elliot, Janet
Gold, Serena Caroline
Kay, Ian Malcolm
Matheson, Frances Rona
Reid, Colin
Videlo, Alyson Jane
Winship, Neil

Toby Harraway has kindly agreed to be co-opted as the 9th member of the Parish Council.

The District Council (Kirton Ward) election was also to be held on 7th May 2015, and Susan Harvey was elected as our SCDC Ward member. Patricia O'Brien remains as our SCC member (for Nacton ward).

Council Meetings

Council meetings are held on the 2nd Tuesday of the month at 7.30pm in the Village Hall. Dates for 2016 are:

12th January
9th February
15th March
12th April (Annual Parish Meeting)
10th May (Annual Parish Council Meeting)
14th June
12th July
9th August
13th September
11th October
8th November
13th December

All Parish Council meetings are open to the public and there is an opportunity at these meetings for residents to put information to the Council and ask questions.

Council Activities

The Council dealt with 21 planning applications (*last year: 19 applications*)

The Council provides funds for:

- The village hall (*maintenance*)
- Parochial Church (*grounds maintenance*)
- Church Field (*grounds maintenance*)
- Waldringfield Wildlife Group (*verges project*)
- Tennis Club (*grounds maintenance*)

Parish Councillors have represented WPC at many meetings:

- Parish Plan
- SALC
- Fairway Committee
- Church Field Trust
- WALGA
- Etc....

Waldringfield PC report, April 2016

Web Site

Meeting dates and other information* about the Council can be found by following the 'Parish Council' link at the Waldringfield web site at:

<http://waldringfield.onesuffolk.net/>

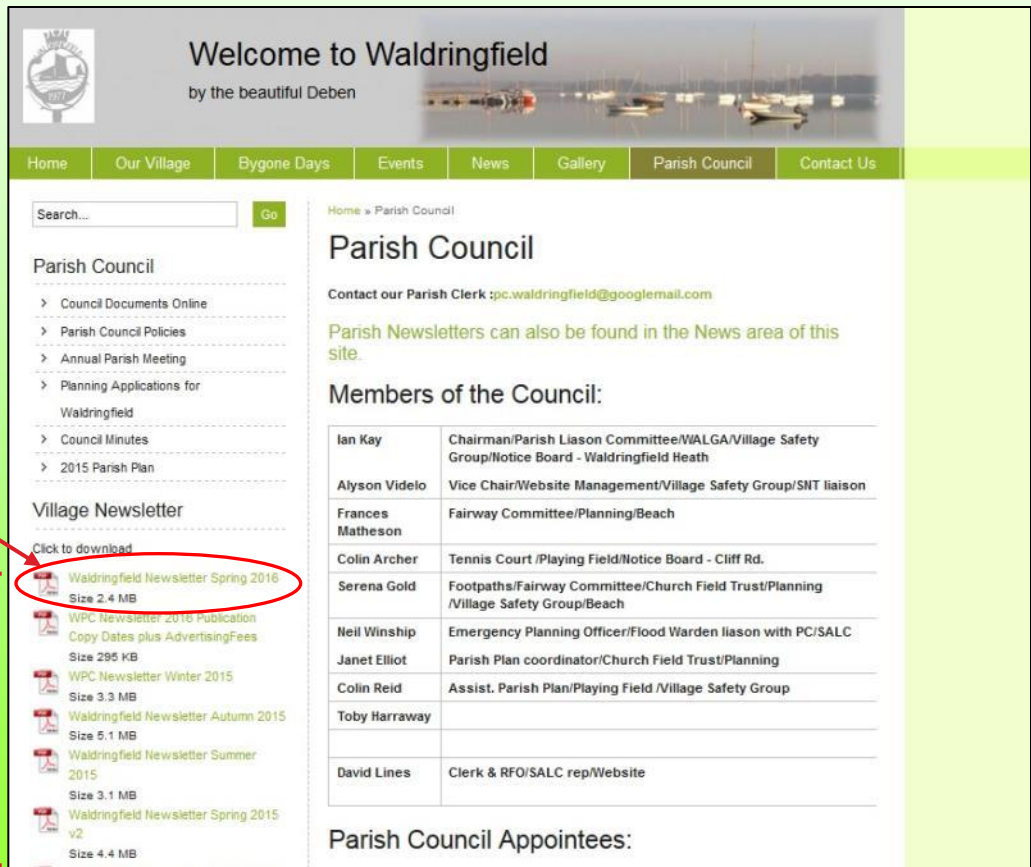


*Agendas, minutes, planning applications, Council policies, news, documents, village newsletter, etc.

Waldringfield PC report, April 2016

Parish Newsletter

- 4 Parish Newsletters are produced each year, on March 1st, June 1st, September 1st and December 1st
- Over 240 copies are delivered to every house in the Parish by 13 volunteers (*thank you!!*)
- The online version can be found on the Waldringfield web site:



The screenshot shows the Waldringfield Parish Council website. The header includes the title 'Welcome to Waldringfield by the beautiful Deben' and a navigation menu with links: Home, Our Village, Bygone Days, Events, News, Gallery, Parish Council, and Contact Us. A search bar is located below the navigation menu. The main content area is divided into two columns. The left column contains links to 'Parish Council' documents and a 'Village Newsletter' section. The 'Village Newsletter' section lists several newsletters, with 'Waldringfield Newsletter Spring 2016' circled in red. The right column contains the 'Parish Council' section, which includes contact information for the Parish Clerk and a list of 'Members of the Council'.

Home » Parish Council

Parish Council

Contact our Parish Clerk : pc.waldringfield@googlemail.com







Parish Newsletters can also be found in the News area of this site.

Members of the Council:

Ian Kay	Chairman/Parish Liason Committee/WALGA/Village Safety Group/Notice Board - Waldringfield Heath
Alyson Videlo	Vice Chair/Website Management/Village Safety Group/SNT liaison
Frances Matheson	Fairway Committee/Planning/Beach
Colin Archer	Tennis Court /Playing Field/Notice Board - Cliff Rd.
Serena Gold	Footpaths/Fairway Committee/Church Field Trust/Planning /Village Safety Group/Beach
Neil Winship	Emergency Planning Officer/Flood Warden liason with PC/SALC
Janet Elliot	Parish Plan coordinator/Church Field Trust/Planning
Colin Reid	Assist. Parish Plan/Playing Field /Village Safety Group
Toby Harraway	
David Lines	Clerk & RFO/SALC rep/Website

Parish Council Appointees:

Click to download

-  [Waldringfield Newsletter Spring 2016](#)
Size 2.4 MB
-  [WPC Newsletter 2016 Publication Copy Dates plus Advertising Fees](#)
Size 295 KB
-  [WPC Newsletter Winter 2015](#)
Size 3.3 MB
-  [Waldringfield Newsletter Autumn 2015](#)
Size 5.1 MB
-  [Waldringfield Newsletter Summer 2015](#)
Size 3.1 MB
-  [Waldringfield Newsletter Spring 2015 v2](#)
Size 4.4 MB

- Earlier copies are also available

Waldringfield PC report, April 2016

Parish Newsletter

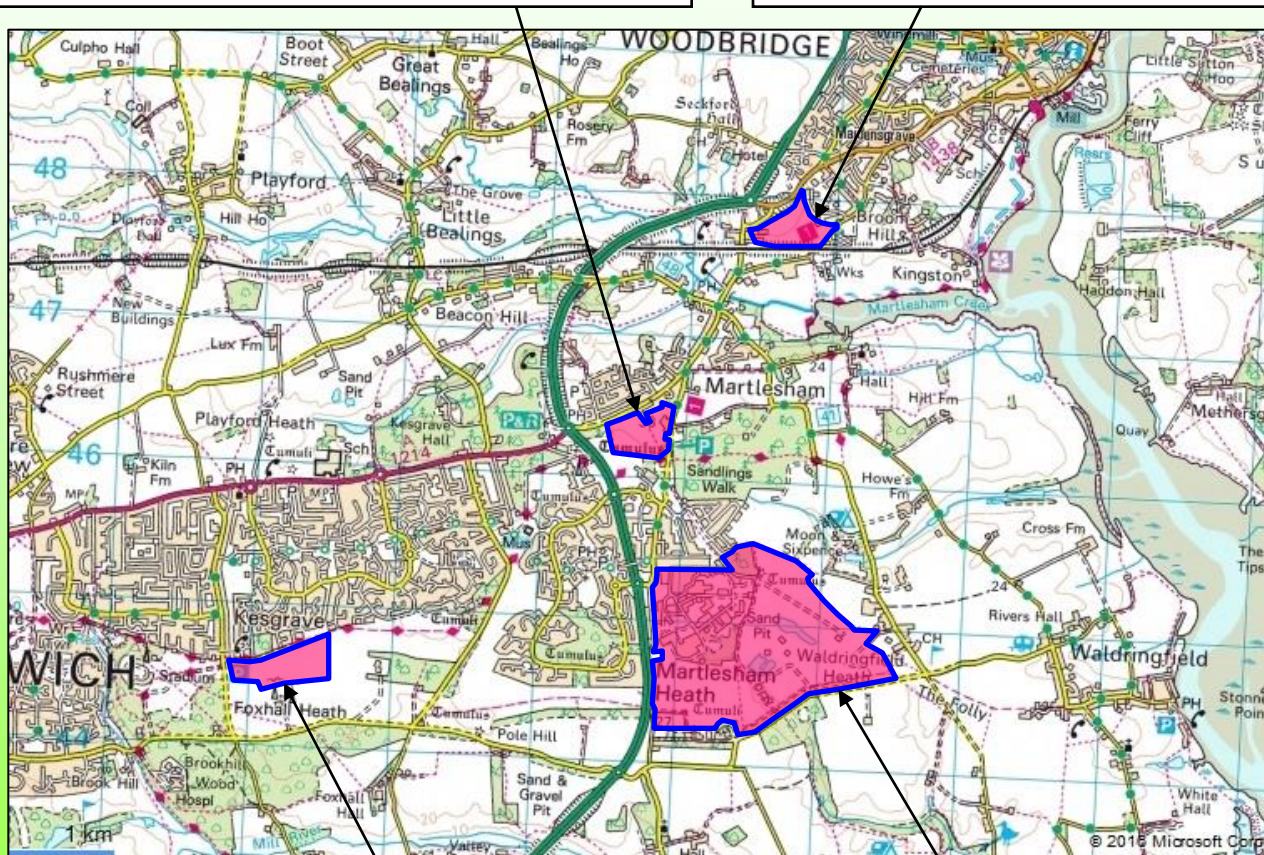
- The Clerk, David Lines, organises its production, printing and distribution.
- Local businesses can advertise in the newsletter
- Non-profit making community groups may promote their activities for free
- Copy deadlines are 2 weeks or so ahead of publication



Planning Applications Beyond Waldringfield

Land South of Main Road, Martlesham (180 dwellings) *Permitted*

Land and Buildings to the East of Bridge Farm, Top Street, Martlesham (215 dwellings) *Refused*



Land to the East of Bell Lane Kesgrave (300 dwellings) *Pending consideration*

Land to the South and East of Adastral Park (2,000 dwellings) *Pending consideration*

Waldringfield PC report, April 2016

Village Verges

Organised by
the Wildlife
Group,
funded by the
Parish Council

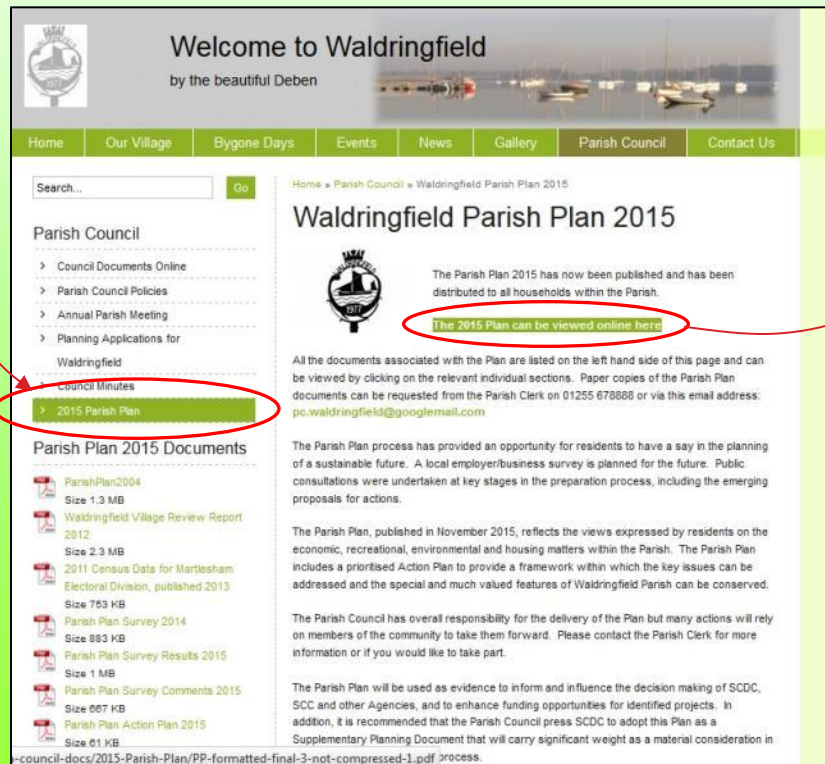


Waldringfield PC report, April 2016

Parish Plan

The final report has been published and distributed to every house in the Parish
(*Janet Elliot's report gives more information*)

The **online version** can be found on the Waldringfield web site:



Waldringfield Parish Plan

Shaping the future of Waldringfield



**Final Report
November 2015**

Litter Bins Compound

The litter bins compound on the beach was an eyesore, and has been refurbished with a much more robust arrangement.



Thanks to the contractor, John Nunn

Questions?