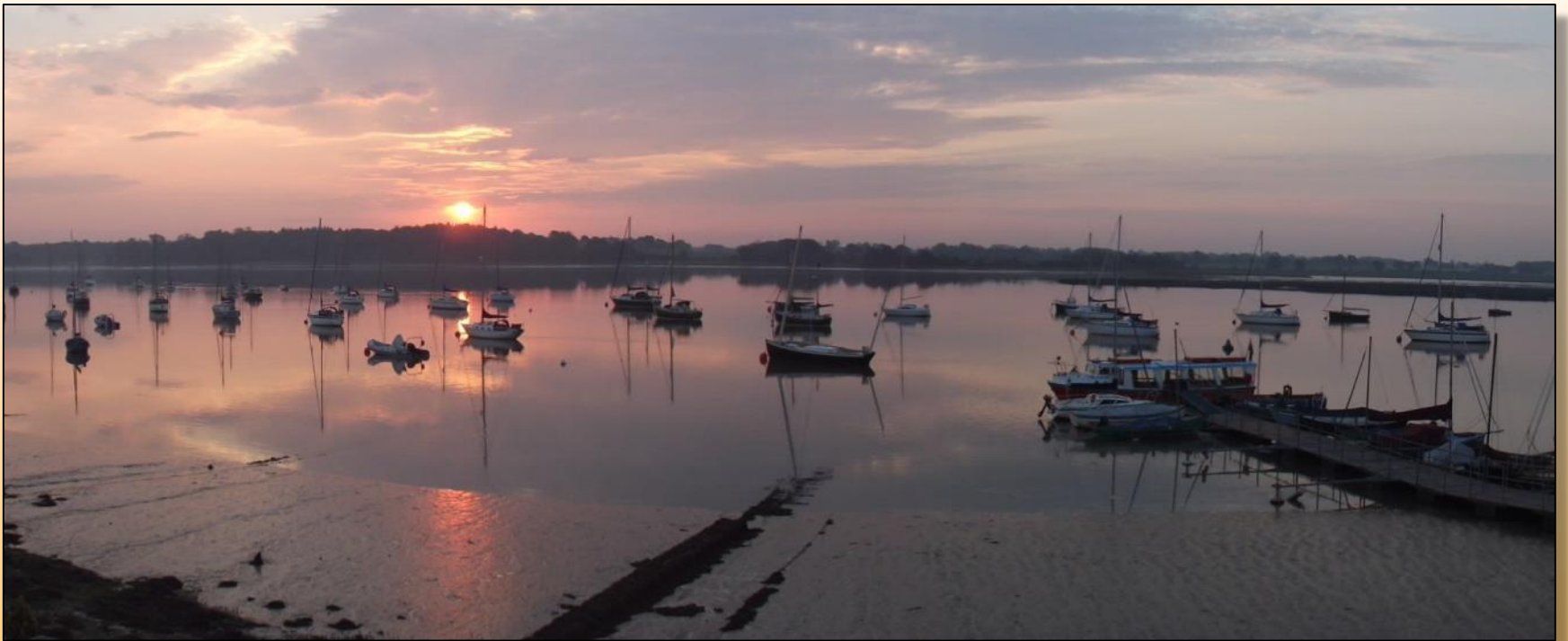


Parish Council report for the Waldringfield Annual Parish Meeting April 2017



Waldringfield PC report, April 2017

Members of the Parish Council:

Ian Kay	Chairman/Parish Liaison/WALGA/Notice Board - Waldringfield Heath
Alyson Videlo	Vice Chair/Website/Community Policing (<i>ad hoc local meetings only</i>)
Frances Matheson	Fairway Committee/Planning
Colin Archer	Tennis Court/Playing Field/Notice Board - Cliff Rd
Serena Gold	Footpaths/Fairway Committee/Church Field Trust/Planning
Colin Reid	Playing Field
Janet Elliot	Parish Plan coordinator/Church Field Trust/Planning
Neil Winship	Emergency Planning Officer/Flood Warden liaison/SALC (<i>E. Area only</i>)
David Lines	Clerk & RFO/SALC/Website

Parish Council Appointees:

Christine Fisher-Kay	Tree Warden
John Smith	Flood warden
Tony Lyon	Deputy Flood Warden
Ged Morgan	Deputy Flood Warden

Non-Parish Council Responsibilities:

Alyson Videlo	Neighbourhood Watch
Susan Harvey	Suffolk Coastal District Councillor (Kirton Ward)
Patricia O'Brien	Suffolk County Councillor (Nacton Ward)

Parish Council Vacancy

Toby Harraway has resigned from the Parish Council. Many thanks to Toby for his services. This leaves a vacancy for one councillor.

Any person interested in putting their name forward for this vacancy should contact the Parish Clerk for further details

For more information go to: www.beacouncillor.org.uk

Council Meetings

Council meetings are held on the 2nd Tuesday of the month at 7.30pm in the Village Hall. Dates for 2017 are:

11th April (Annual Parish Meeting)
9th May (Annual Parish Council Meeting)
13th June
11th July
8th August
12th September
10th October
14th November
12th December

All Parish Council meetings are open to the public and there is an opportunity at these meetings for residents to put information to the Council and ask questions.

Council Activities

The Council dealt with 25 planning applications (*last year: 21 applications*)

The Council provides funds for:

- The village hall (*maintenance*)
- Parochial Church (*grounds maintenance*)
- Church Field (*grounds maintenance*)
- Waldringfield Wildlife Group (*verges project*)
- Tennis Club (*grounds maintenance*)

Parish Councillors have represented WPC at many meetings:

- SALC
- Fairway Committee
- Church Field Trust
- WALGA
- Etc....

Waldringfield PC report, April 2017

Web Site

Meeting dates and other information* about the Council can be found by following the 'Parish Council' link at the Waldringfield web site at:

<http://waldringfield.onesuffolk.net/>

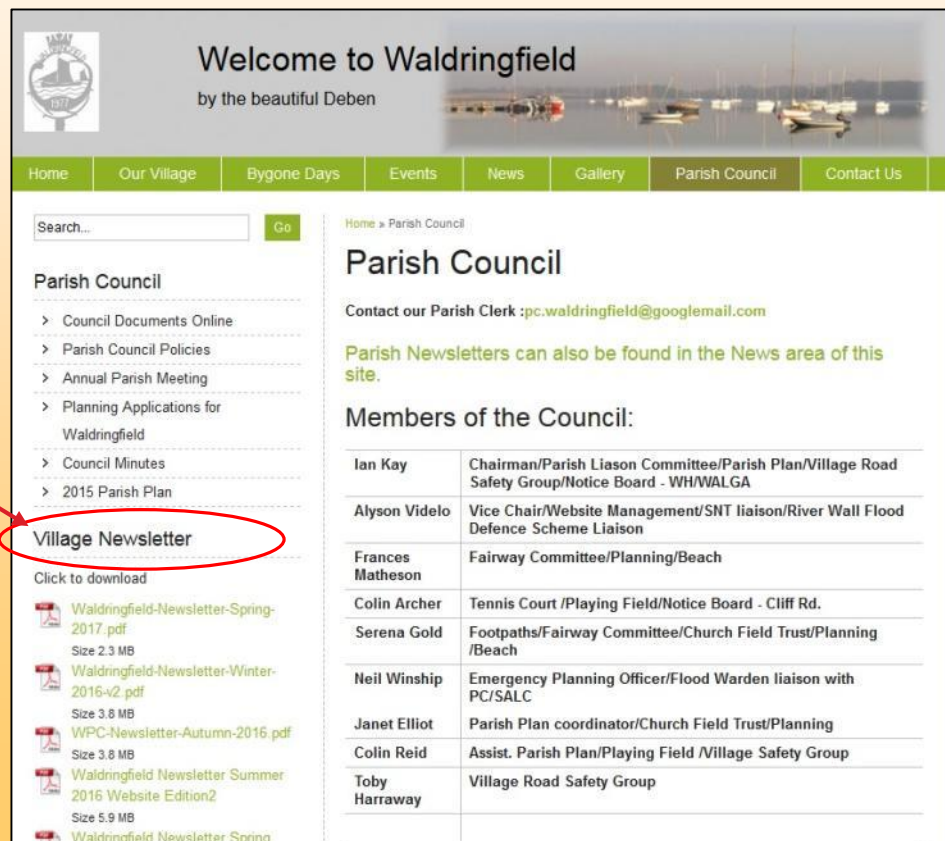


*Agendas, minutes, planning applications, Council policies, news, documents, village newsletter, etc.

Waldringfield PC report, April 2017

Parish Newsletter

- 4 Parish Newsletters are produced each year, on March 1st, June 1st, September 1st and December 1st
- Over 240 copies are delivered to every house in the Parish by 13 volunteers (*thank you!!*)
- The online version can be found on the Waldringfield web site:



The screenshot shows the Waldringfield Parish Council website. The header includes the title 'Welcome to Waldringfield by the beautiful Deben' and a navigation menu with links: Home, Our Village, Bygone Days, Events, News, Gallery, Parish Council, and Contact Us. A search bar is located below the menu. The main content area is titled 'Parish Council' and lists various links under the heading 'Parish Council', including 'Council Documents Online', 'Parish Council Policies', 'Annual Parish Meeting', 'Planning Applications for Waldringfield', 'Council Minutes', and '2015 Parish Plan'. The 'Village Newsletter' link is highlighted with a red circle. Below this, there is a section titled 'Click to download' with a list of newsletter files: 'Waldringfield-Newsletter-Spring-2017.pdf' (Size 2.3 MB), 'Waldringfield-Newsletter-Winter-2016-v2.pdf' (Size 3.8 MB), 'WPC-Newsletter-Autumn-2016.pdf' (Size 3.8 MB), 'Waldringfield Newsletter Summer 2016 Website Edition2' (Size 5.9 MB), and 'Waldringfield Newsletter Spring'. A red line connects the 'online version' text from the list above to the 'Village Newsletter' link. Another red line connects the 'Earlier copies are also available' text from the list below to the download links.

Home » Parish Council

Parish Council

Contact our Parish Clerk : pc.waldringfield@googlemail.com

Parish Newsletters can also be found in the News area of this site.

Members of the Council:

Ian Kay	Chairman/Parish Liason Committee/Parish Plan/Village Road Safety Group/Notice Board - WH/WALGA
Alyson Videlo	Vice Chair/Website Management/SNT liaison/River Wall Flood Defence Scheme Liaison
Frances Matheson	Fairway Committee/Planning/Beach
Colin Archer	Tennis Court /Playing Field/Notice Board - Cliff Rd.
Serena Gold	Footpaths/Fairway Committee/Church Field Trust/Planning /Beach
Neil Winship	Emergency Planning Officer/Flood Warden liaison with PC/SALC
Janet Elliot	Parish Plan coordinator/Church Field Trust/Planning
Colin Reid	Assist. Parish Plan/Playing Field /Village Safety Group
Toby Harraway	Village Road Safety Group

- Earlier copies are also available

Waldringfield PC report, April 2017

Parish Newsletter

- The Clerk, David Lines, organises its production, printing and distribution.
- Local businesses can advertise in the newsletter
- Non-profit making community groups may promote their activities for free
- Copy deadlines are 2 weeks or so ahead of publication
- Format changed to A5, full colour

Waldringfield Church Field Trust

The Church Field is looking wonderful at the moment with masses of daisies and the May blossom coming out. There is always something to see - house martins and swallows are now around, linnet are in the gorse and skylarks usually singing overhead. Please keep dogs on leads to avoid disturbance of these ground nesting birds. Bluebells have been flowering for some time, the English ones near the car park and the Spanish ones up at the top end. Butterflies and bees are flitting and buzzing. Don't forget there is a basketball practice area to use, and these windy days must be good for kite flying.

We are informed that bagged dog waste can be put in the ordinary bins, one at each end of the field, in addition to the special red one on the public footpath route.

Christine Fisher Kay (Chairperson) 736384

Compost at Home beginner's workshop

Ever thought about making your own compost to use in your garden?

Meet a Master Composter at one of our free 2-hour workshops to find out how easy it is - and receive a free home compost bin delivered to your door!

Workshops are designed for those completely new to composting, or those who've tried before but need a little help.

So as long as you have a small space in your garden, come along to find out more.

Join us at **Waldringfield Community Centre, Thurs 20 June 10pm**

Get more info and to register go to www.waldringfieldpc.org.uk

01473 736276


01473 736276

01473 736276

Waldringfield Wildlife Group

Invites you to

An Illustrated Talk on



The Saltmarsh by Karen Thomas

Project manager for the Water Management Alliance

Saturday 10th December at 11.00 am

Kennedy Room, Waldringfield Village Hall

Admission: Non-members & Visitors £3

Members - £1

Preceded by a Members meeting at 10.00 am prompt start.

New members welcome (Membership £5)

Followed by the Members' bring & share' Christmas lunch.

Enquiries: Linda 736044

Waldringfield Primary School

Wildlife School

Week on **December 4th** in our Forest School after making things for Tree Dressing Sunday - we'll add trees in the play area opposite the School and welcome people in the village to add their ornaments too.


The School collects printer cartridges for re-cycling co-ordinated by the Eco-team which puts any more towards projects within the school. At the moment we are hoping to re-line the pond which is leaking badly. We have been collecting for about two years and still have only half a box - a full box is up to £100! Please let us have your printer cartridges for recycling!

The Squirrels class has also helped with the Village Verges project co-ordinated by the Wildlife Group. They planted 400 purple crocus bulbs provided by the R. Neil Welling. P for purple and p for polio - Rotary has been working towards the eradication of polio - and purple because vaccinated children get ban violet dye so they don't get a double dose. The children are looking forward to seeing the crocus in the Spring and then again and again as they are like and remembering they helped: we will be having a collection in the spring for crocus in bloom.

If you would like to help the school's Eco-team work towards the school's Flag (www.Eco-Schools.com) which we should be applying for at the end of the year, please get in touch.

Many thanks

Nicola Dawson
School Business Manager, Waldringfield Primary School
Tel: 01473 736276 school@waldringfield.suffolk.sch.uk



The Macmillan Coffee Morning raised an amazing £1371.86. The coffee morning hostesses would like to thank the village for its continued support for all the events

No. 53 - Autumn 2016

Harvest Supper


Waldringfield Village Hall
Saturday 8th October.

The Panto this year is *A Ladd in Trouble*.


It promises to be another wonderful evening of good food and good fun.

Tickets are now on sale from the Post Office van - Monday, Wednesday or Friday 11-1. Or if you can't get to the van, order from me (Trish Eaton) on 736754.

We are pleased to be offering tickets at the same price as last year. Adults £10, children up to 15 years £5 or the family ticket, for 2 adults + 2 children under 15, for £25.



Black & White Productions and Gussy Place present



CHANGING FACES

HIDDEN LIVES

by Suzanne Hawkes

A journey through the past and present of 10 places in the town and around the village

Thurs 22nd Sept
Waldringfield Village Hall
7.30pm


Tickets: £12 & £10 01394 279613 or Abbeygate Lighting, Felixstowe

An apple glut? Making wine this year? Too many tomatoes and run out of freezer space?

The WALGA Community Fruit Preserving Equipment is yours to hire for just £5 per suite - that's the special WG (Waldringfield Gardeners) members discount - your annual membership covers multiple uses.

You can juice your apples, sterilise the juice, thirteen bottles at a time, pulp grapes or other fruit and bottle tomatoes etc. 14 bottles at a go: it's so easy, just pack the fruit in, set the timer and the temperature according to the chart and go to bed. Bottled fruit lasts for years.

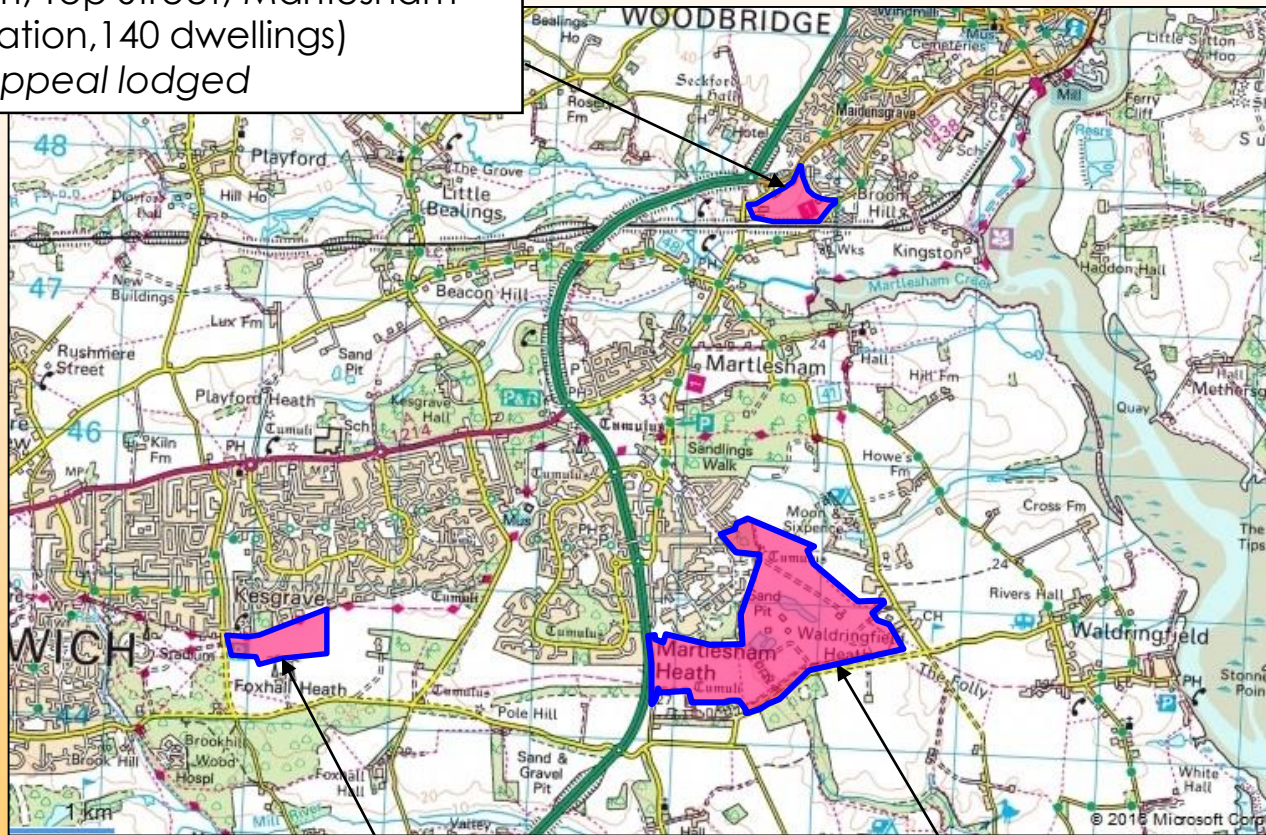
For details, go to the onesuffolk website or contact Betsy Reid betsy@tak21.com



The mobile grocer will be in the village every Tuesday as usual but from November 1st will be at: Village Way 9.50am to 10.00am then Sullivan Place 10.10 to 10.25am

Planning Applications Beyond Waldringfield

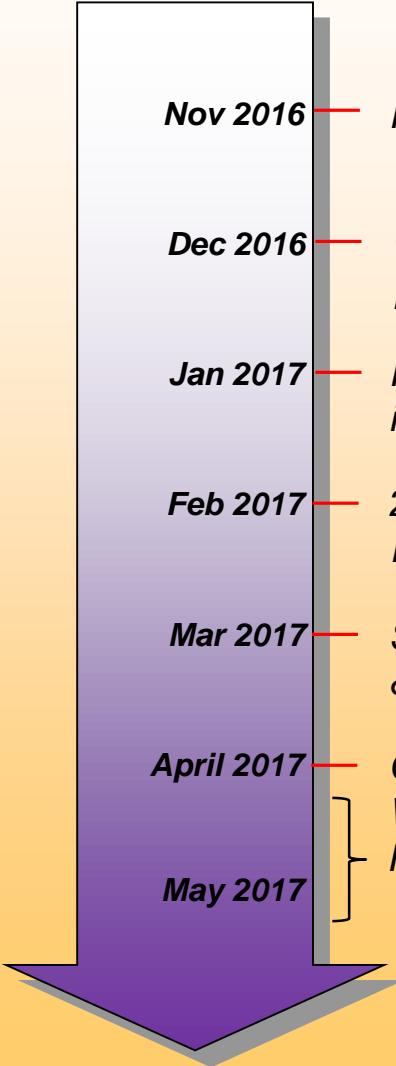
Land and Buildings to the East of Bridge Farm, Top Street, Martlesham
(Re-application, 140 dwellings)
Refused. Appeal lodged



Land to the East of Bell Lane Kesgrave (300 dwellings) *Refused. Appeal in progress*

Land to the South and East of Adastral Park (2,000 dwellings) *Application expected April 2017*

Adastral Park (Past timeline)

- 
- Nov 2016** — *Informal meeting between WPC and CEG/CODE to discuss process*
 - Dec 2016** — *1st public exhibitions/consultation events at Martlesham and Waldringfield
EIA Scoping Report issued, followed by public consultation*
 - Jan 2017** — *Informal meeting between WPC and SCDC to discuss process and pre-application issues*
 - Feb 2017** — *2nd public exhibitions/consultation events at Martlesham and Waldringfield
Draft Masterplan issued, followed by public consultation*
 - Mar 2017** — *Site visit to Adastral Park development site. (WPC, Brightwell PC, CEG, CODE, SCC & SCDC, followed by a discussion, mainly about transport)*
 - April 2017** — *CEG submit outline planning application. Briefing on outline planning application with
WPC, Martlesham PC, Brightwell PC, CEG, CODE and SCDC*
 - May 2017** — *Public consultation on CEG's outline planning application (4 weeks → 10th May)*

Adastral Park (Probable future timeline)

Summer 2017

SCDC determine the outline planning application

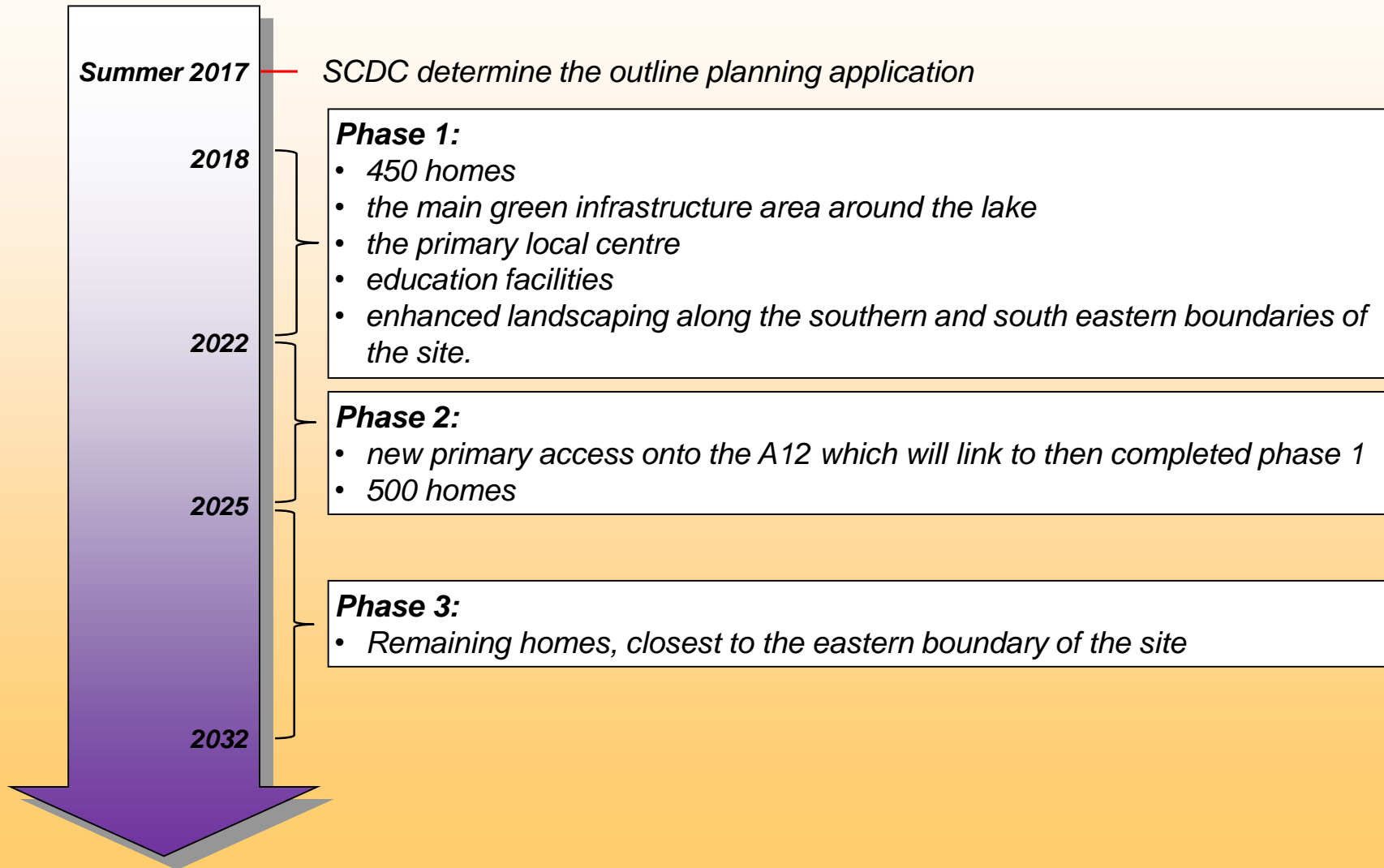
CEG develop infrastructure (roads, school, community centre, etc)

CEG sell parcels of land to individual developers

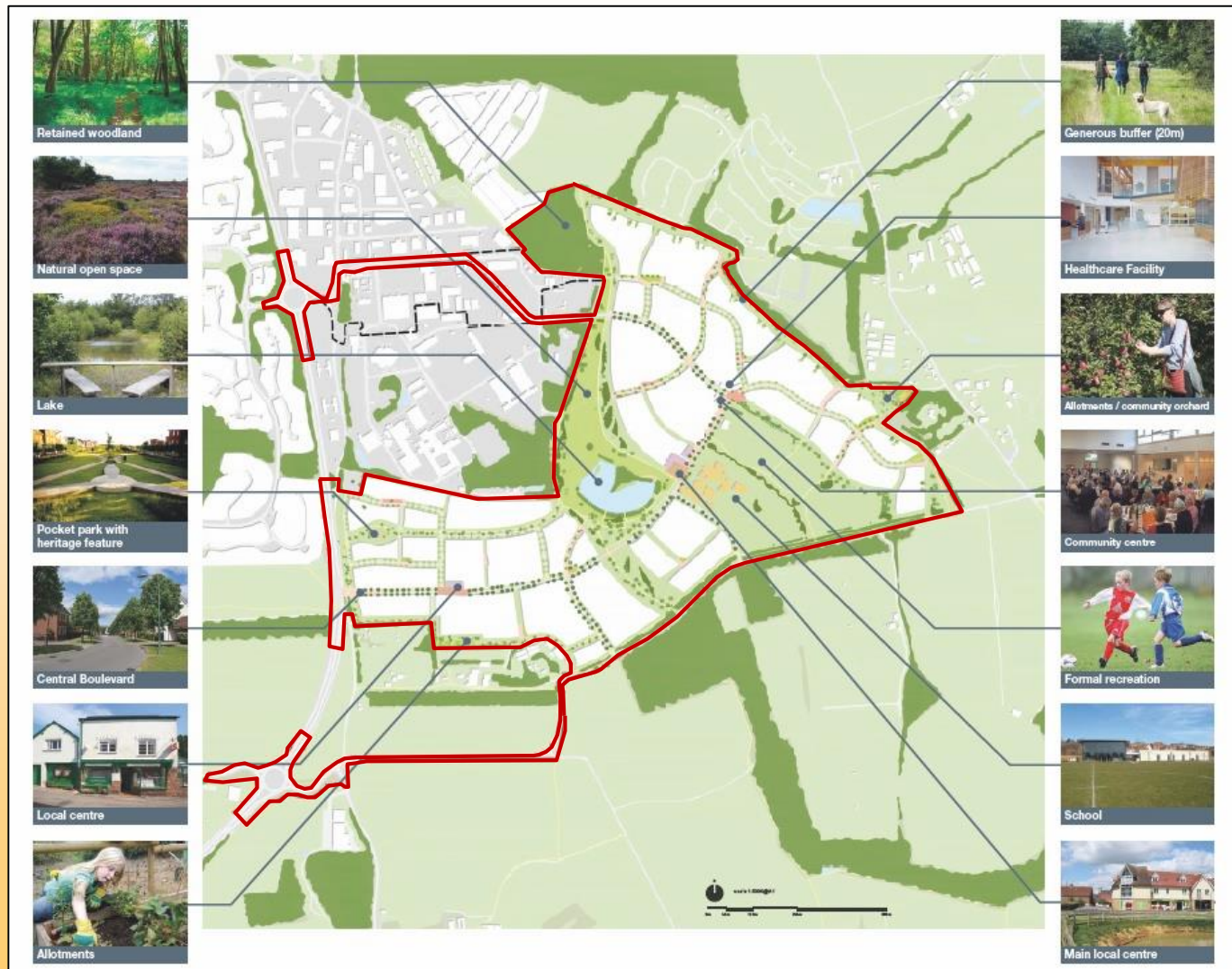
Developers submit detailed planning application for their land parcels

Developers build houses on their land parcels

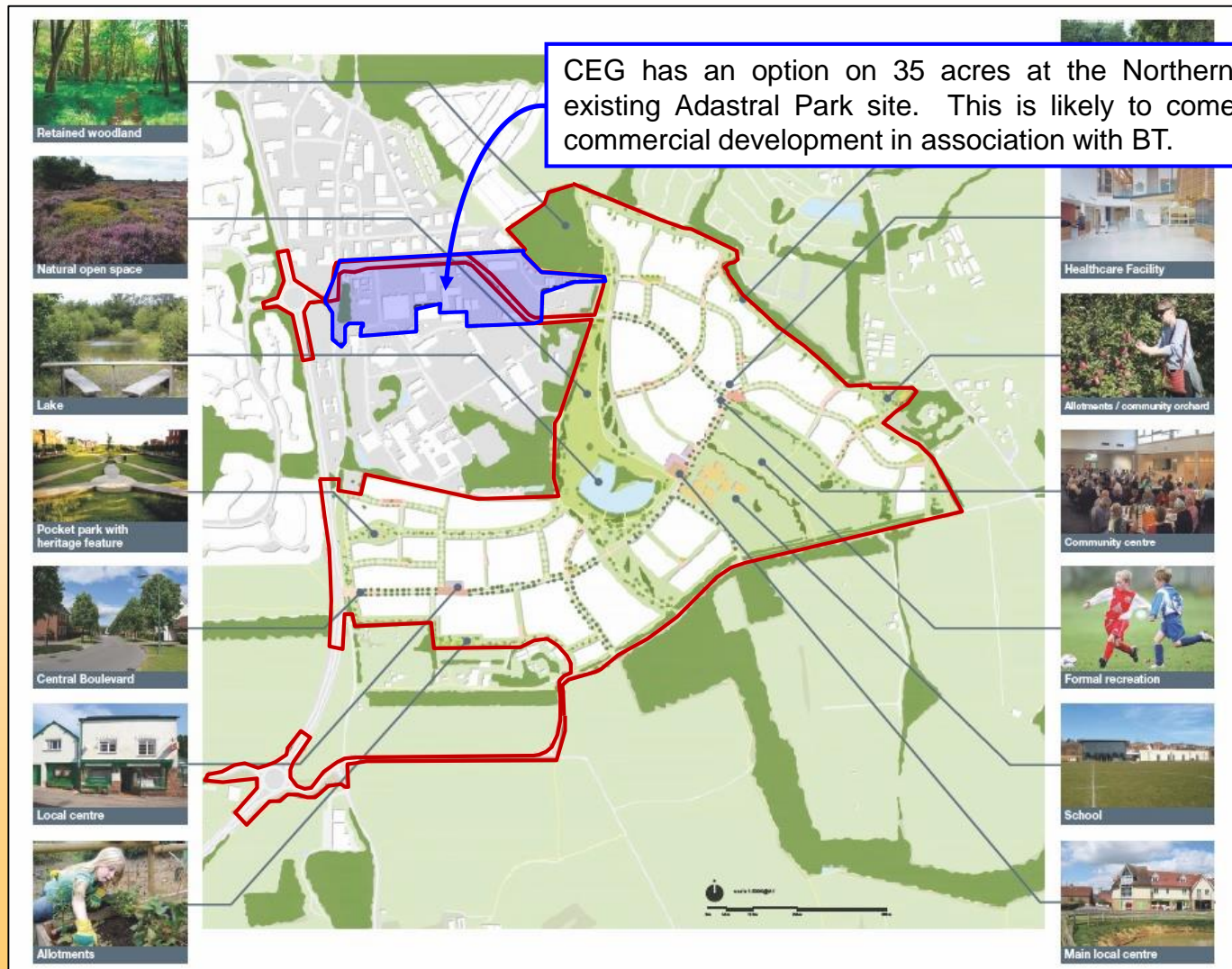
Adastral Park (Probable future timeline)



Adastral Park (Masterplan)



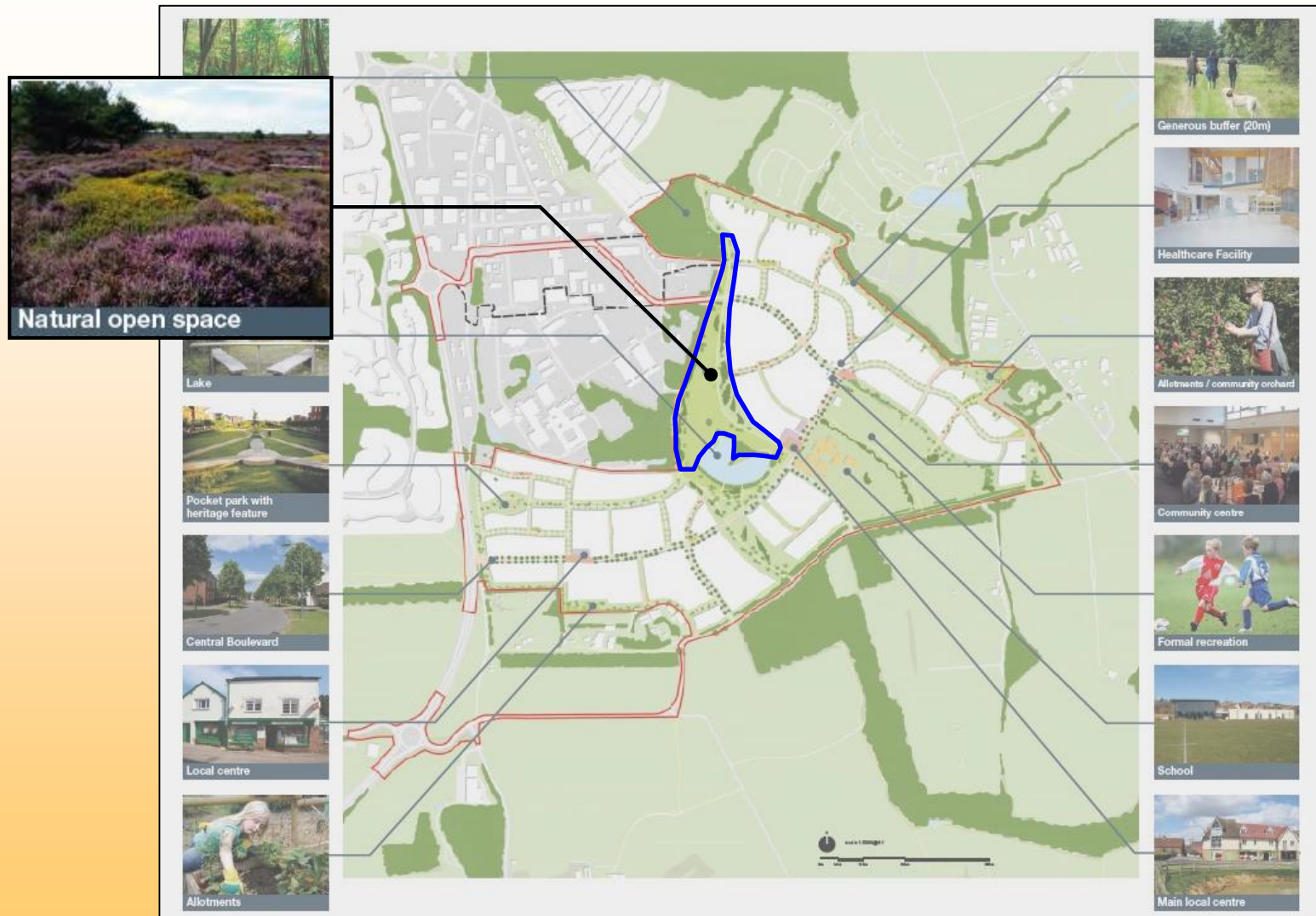
Adastral Park (Masterplan)



Adastral Park (Masterplan)



Adastral Park (Masterplan)



Adastral Park (Masterplan)



Adastral Park (Masterplan)



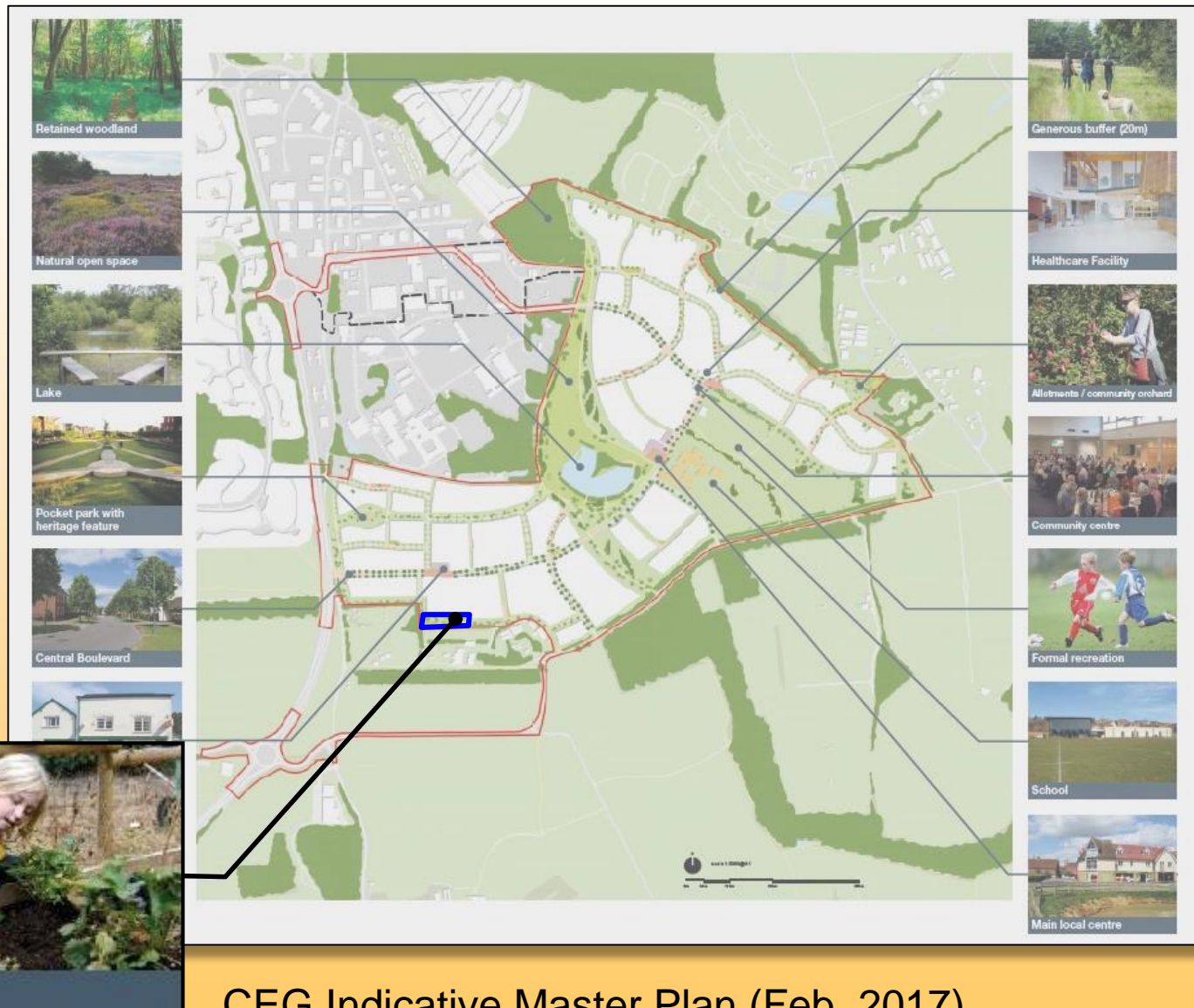
Adastral Park (Masterplan)



Adastral Park (Masterplan)

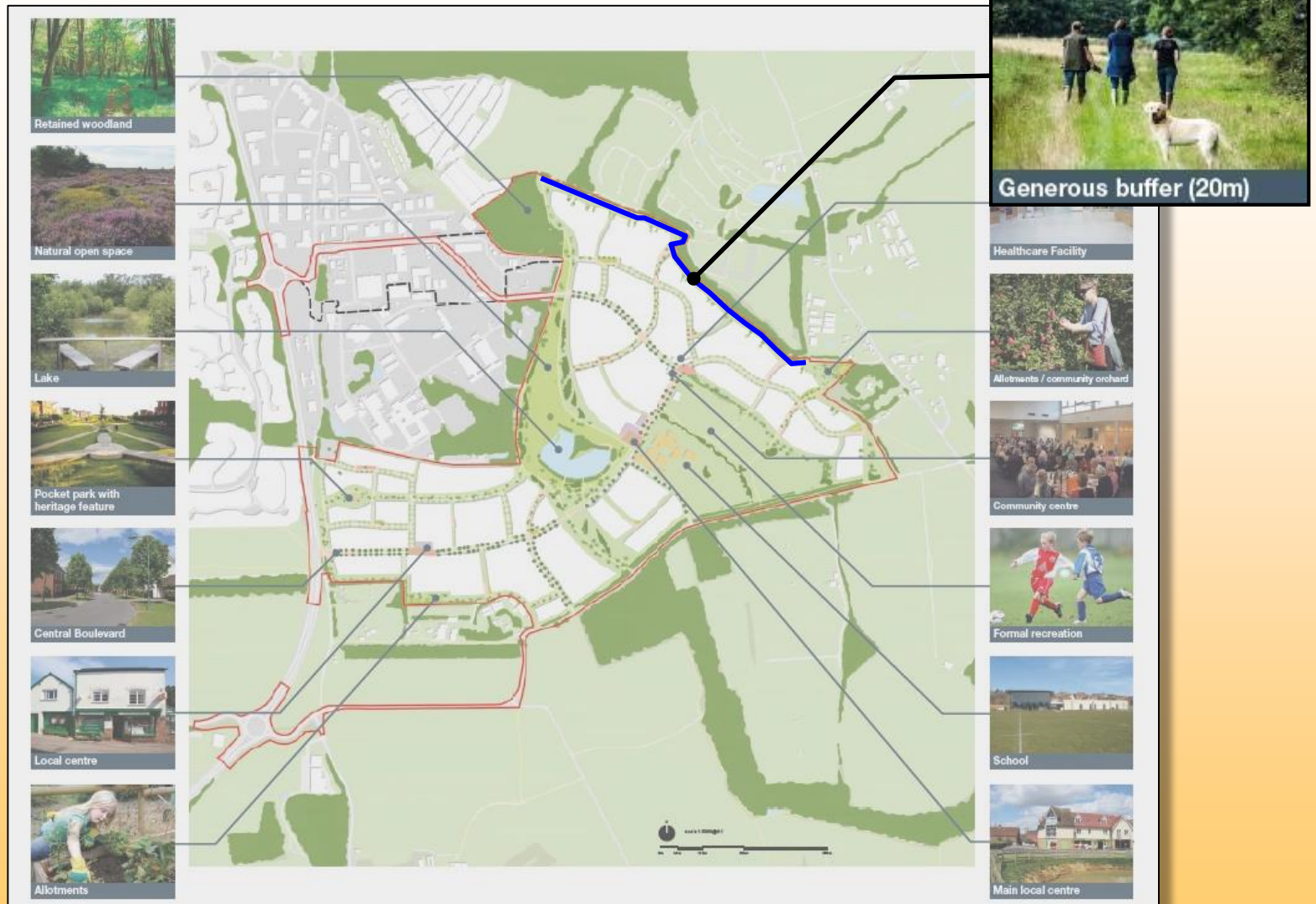


Adastral Park (Masterplan)



CEG Indicative Master Plan (Feb. 2017)

Adastral Park (Masterplan)



Adastral Park (Masterplan)



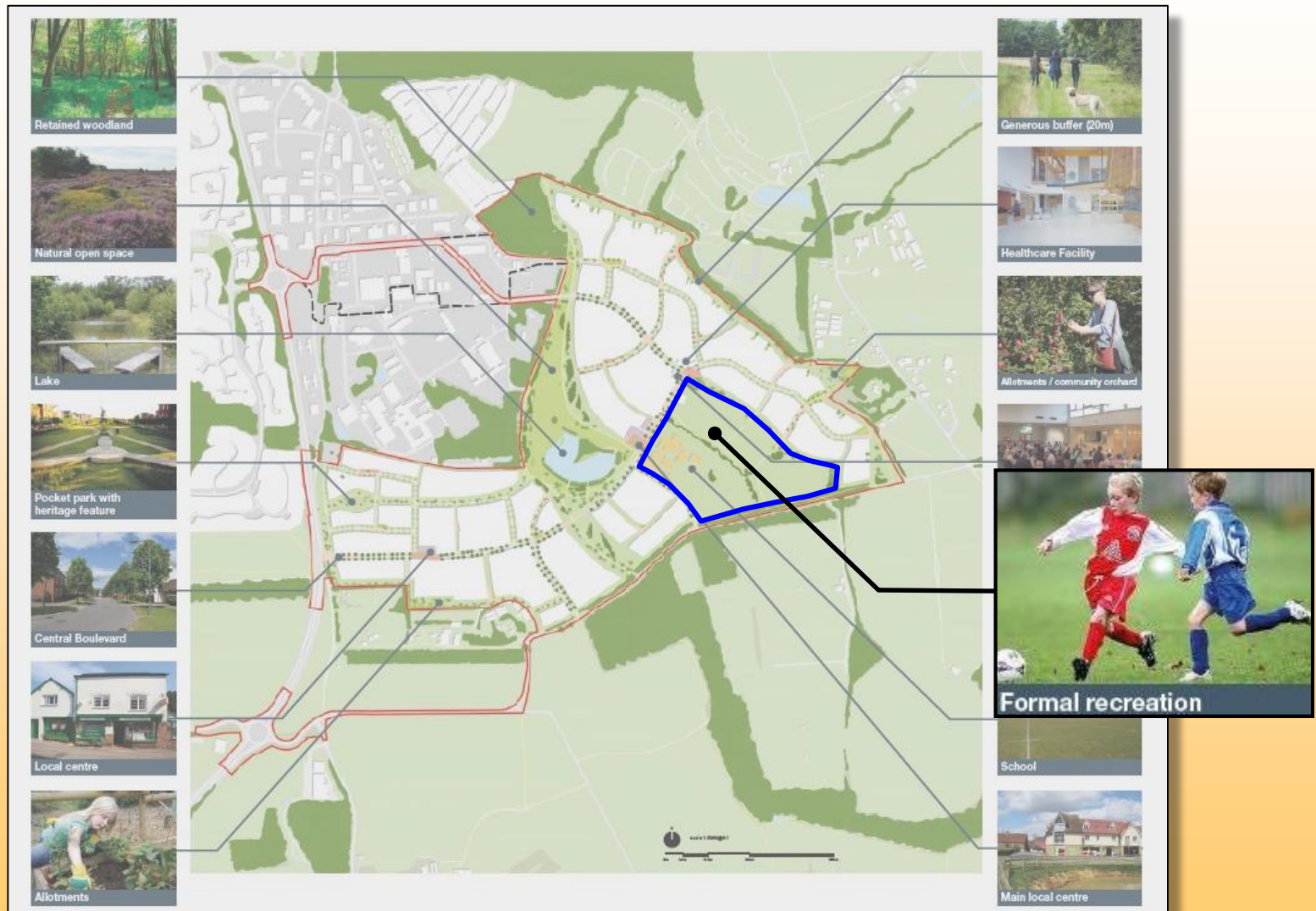
Adastral Park (Masterplan)



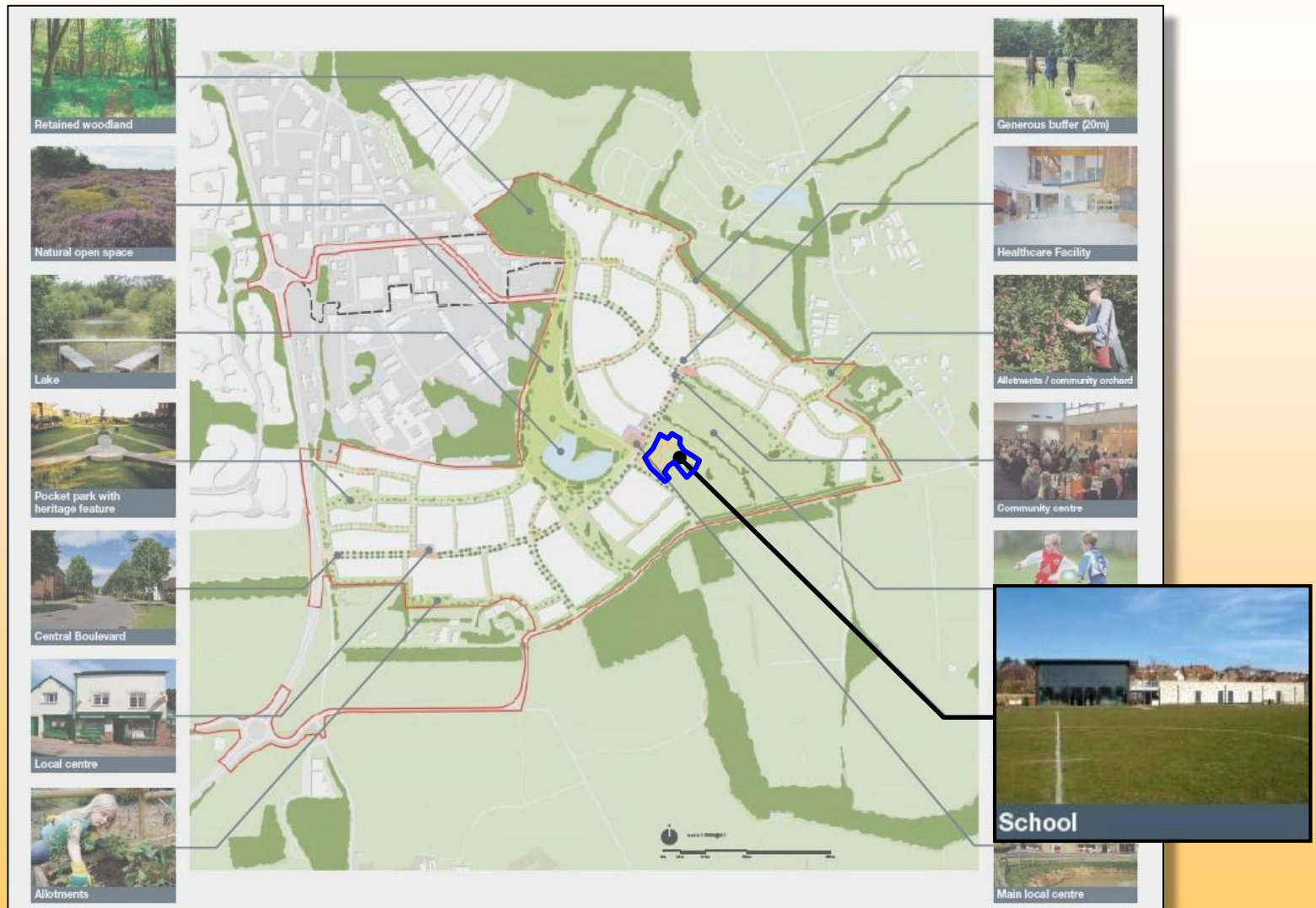
Adastral Park (Masterplan)



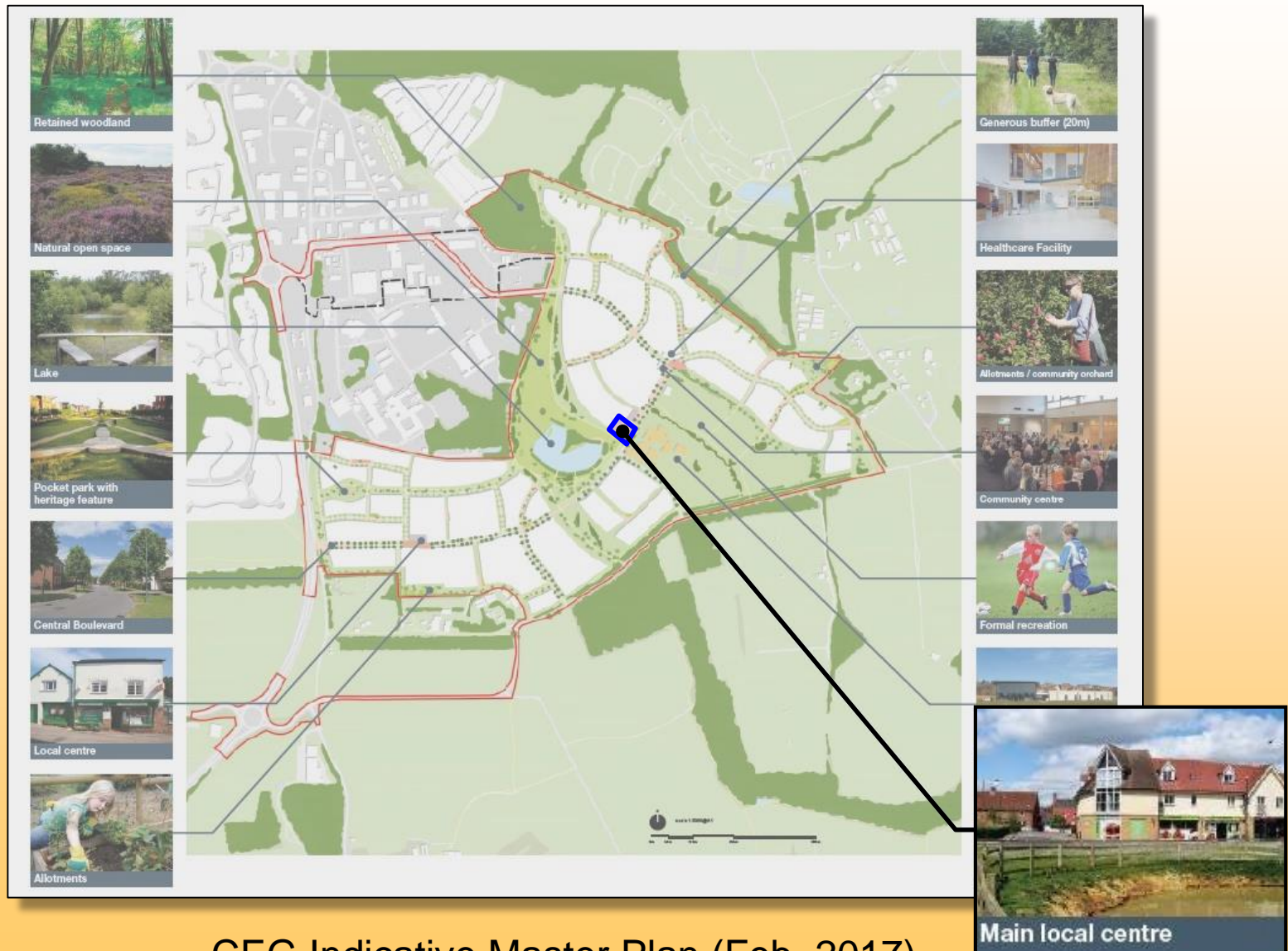
Adastral Park (Masterplan)



Adastral Park (Masterplan)

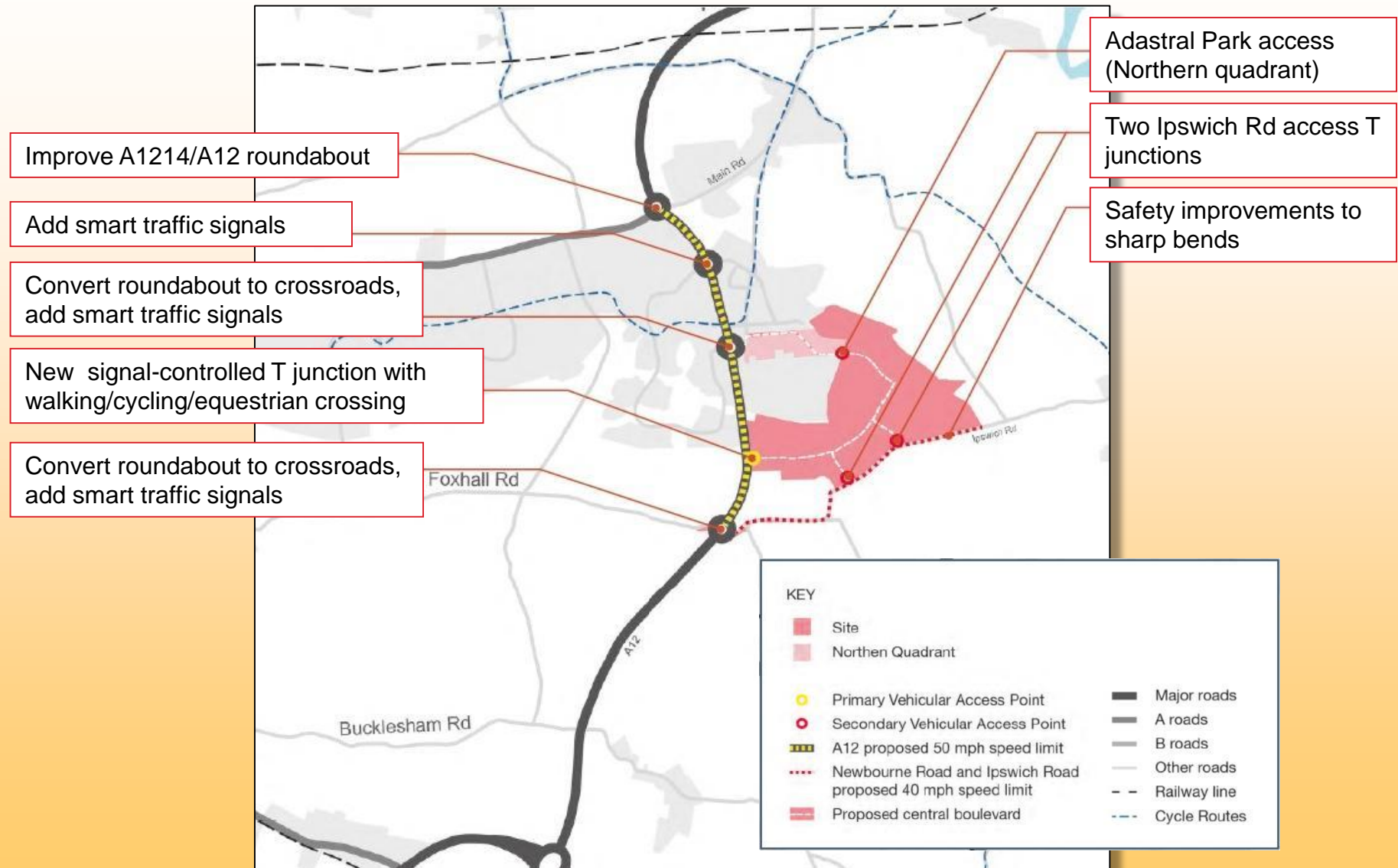


Adastral Park (Masterplan)



CEG Indicative Master Plan (Feb. 2017)

Adastral Park (Transport)



Adastral Park (Green Infrastructure)

- Retain public rights of way, improve bridleway on southern edge and provide new circular routes
- protect existing mature landscaping, including Spratts Plantation and woodland along the boundary, and establish new planting
- retain and enhance the lake as a central focal point
- Lower density, large plot housing to the east will be set back with new green/open spaces, hedgerows and tree planting to provide a buffer
- new sizable, attractive open green space will offer a range of recreational opportunities



East Anglia One Offshore Windfarm



East Anglia One Offshore Windfarm



Cable route from Bawdsey to Bramford substation

East Anglia One Offshore Windfarm

JANUARY 2017

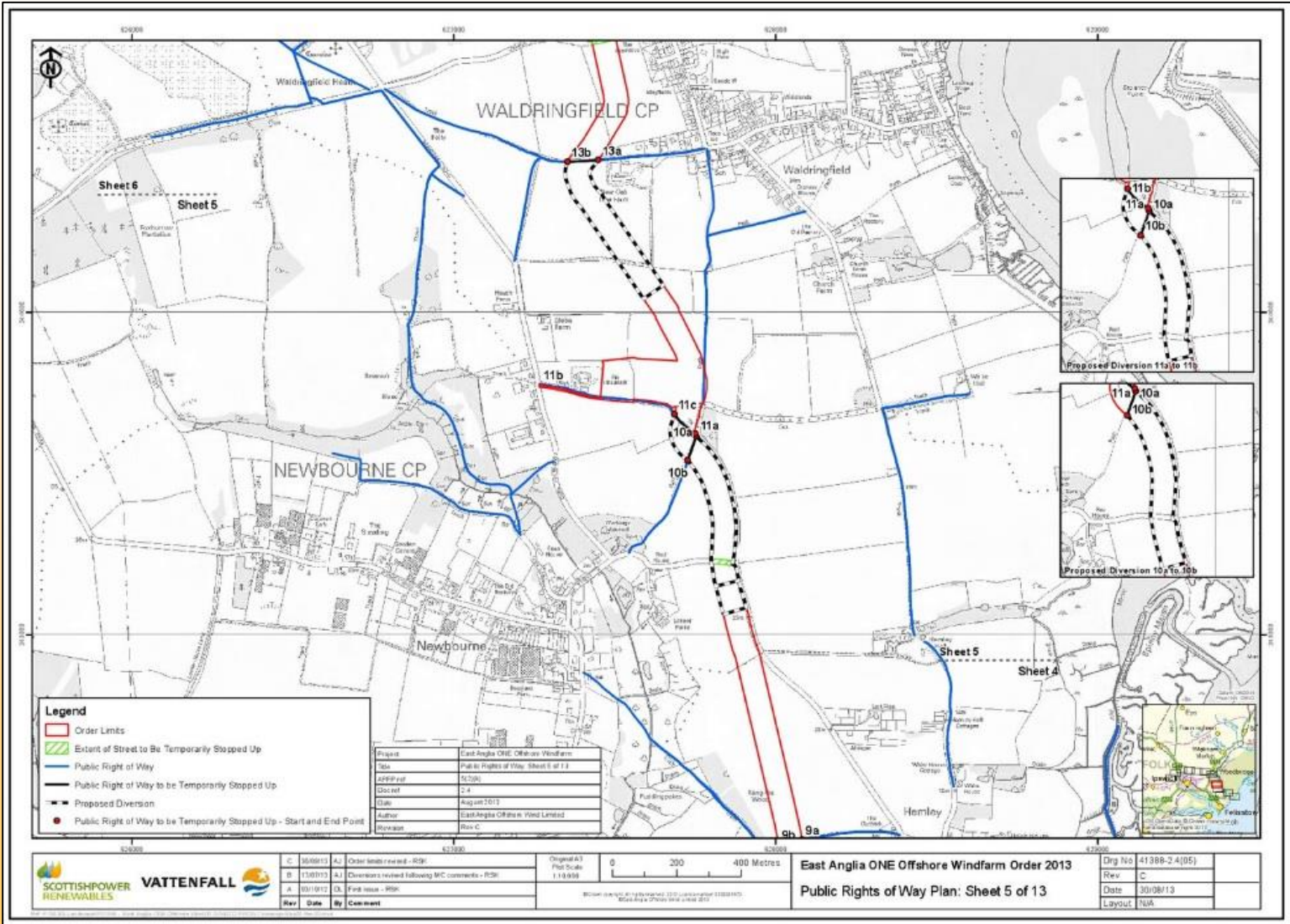
Onshore Construction Commences



In January 2017, onshore construction works for East Anglia ONE are due to formally commence. This work will include ducts and undergrounding of up to six onshore cables, each at 37 kilometres in length and the construction of a converter station at Bramford.

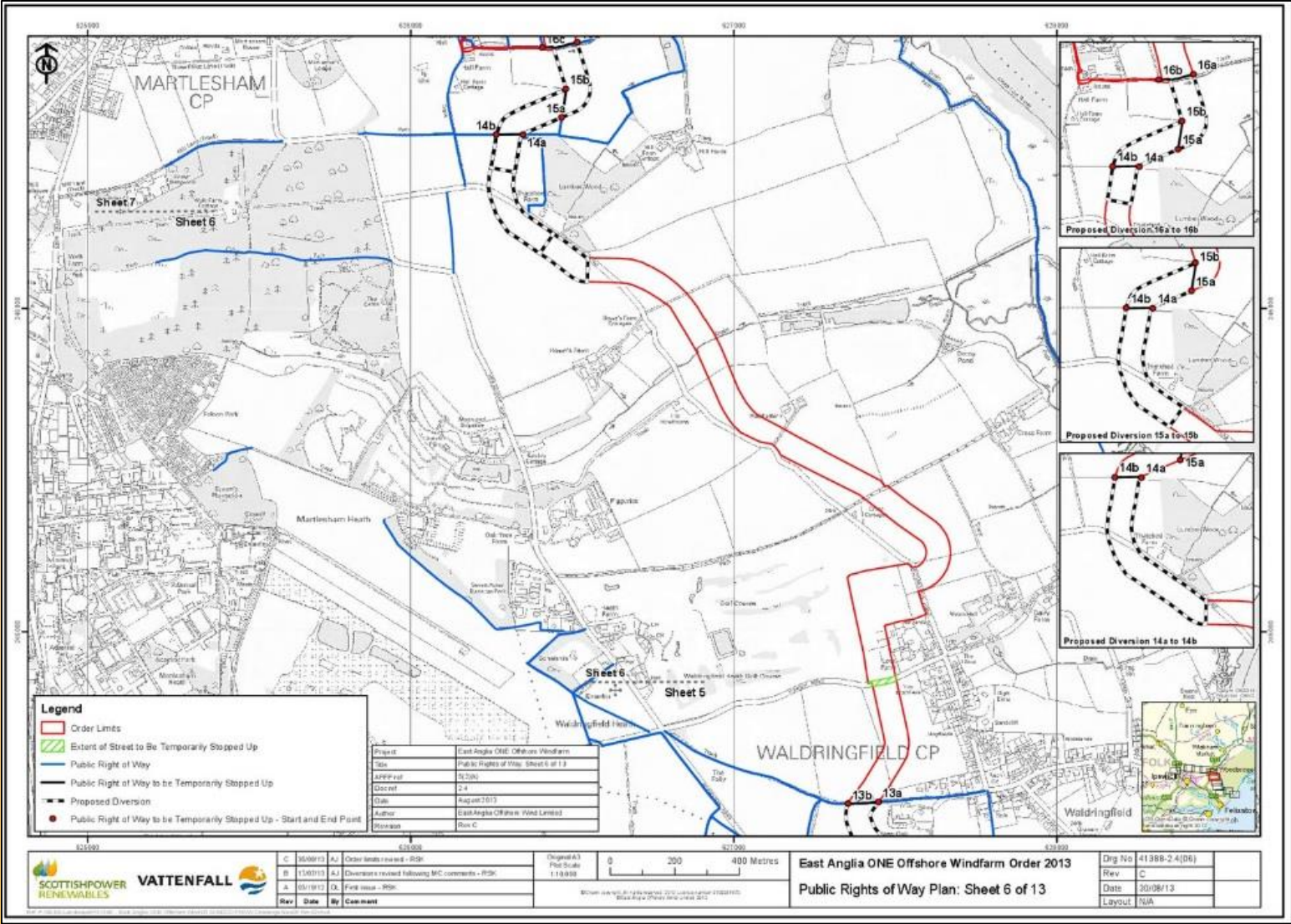
Waldringfield PC report, April 2017

East Anglia One Offshore Windfarm

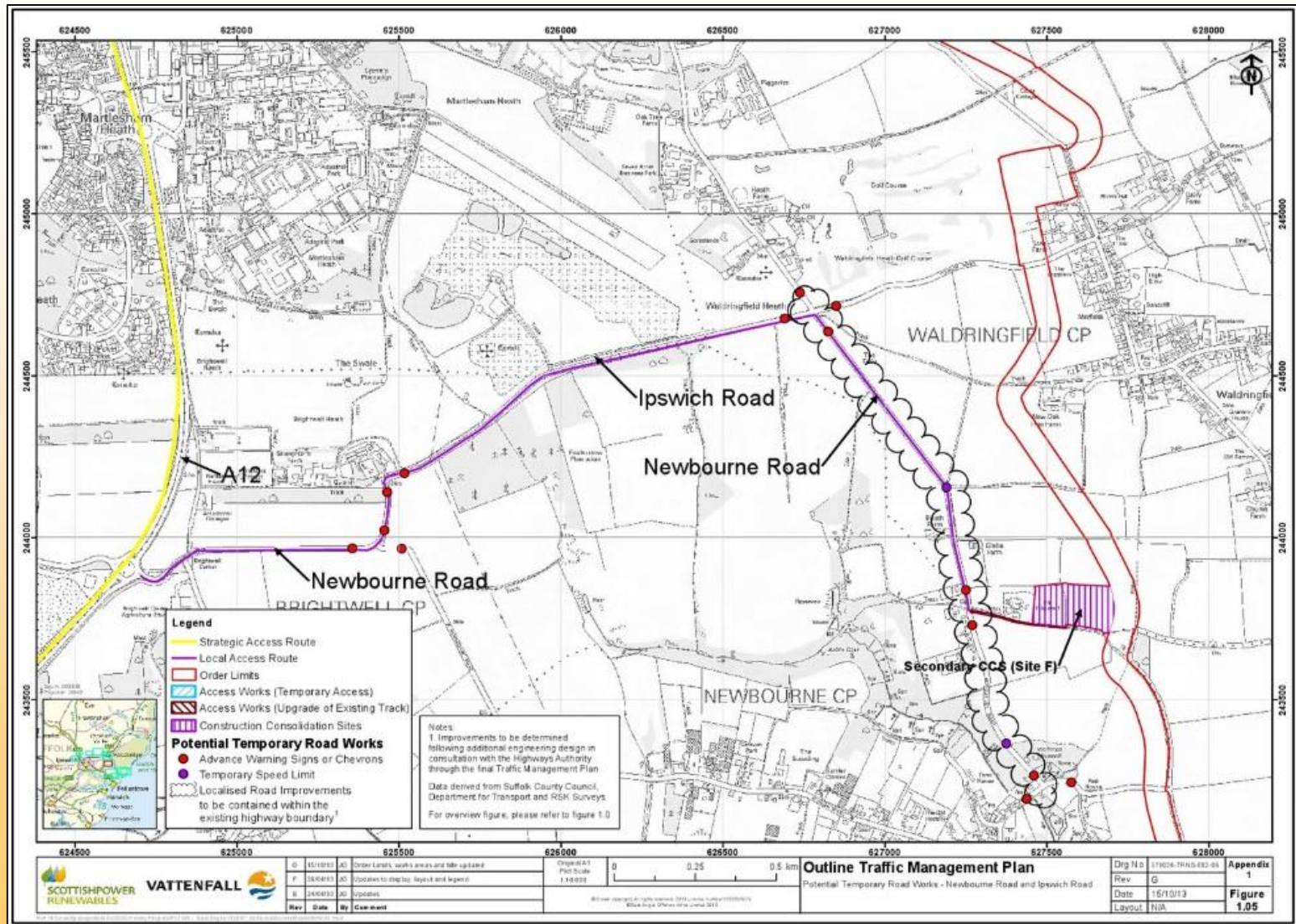


Cable route south of Waldringfield

East Anglia One Offshore Windfarm

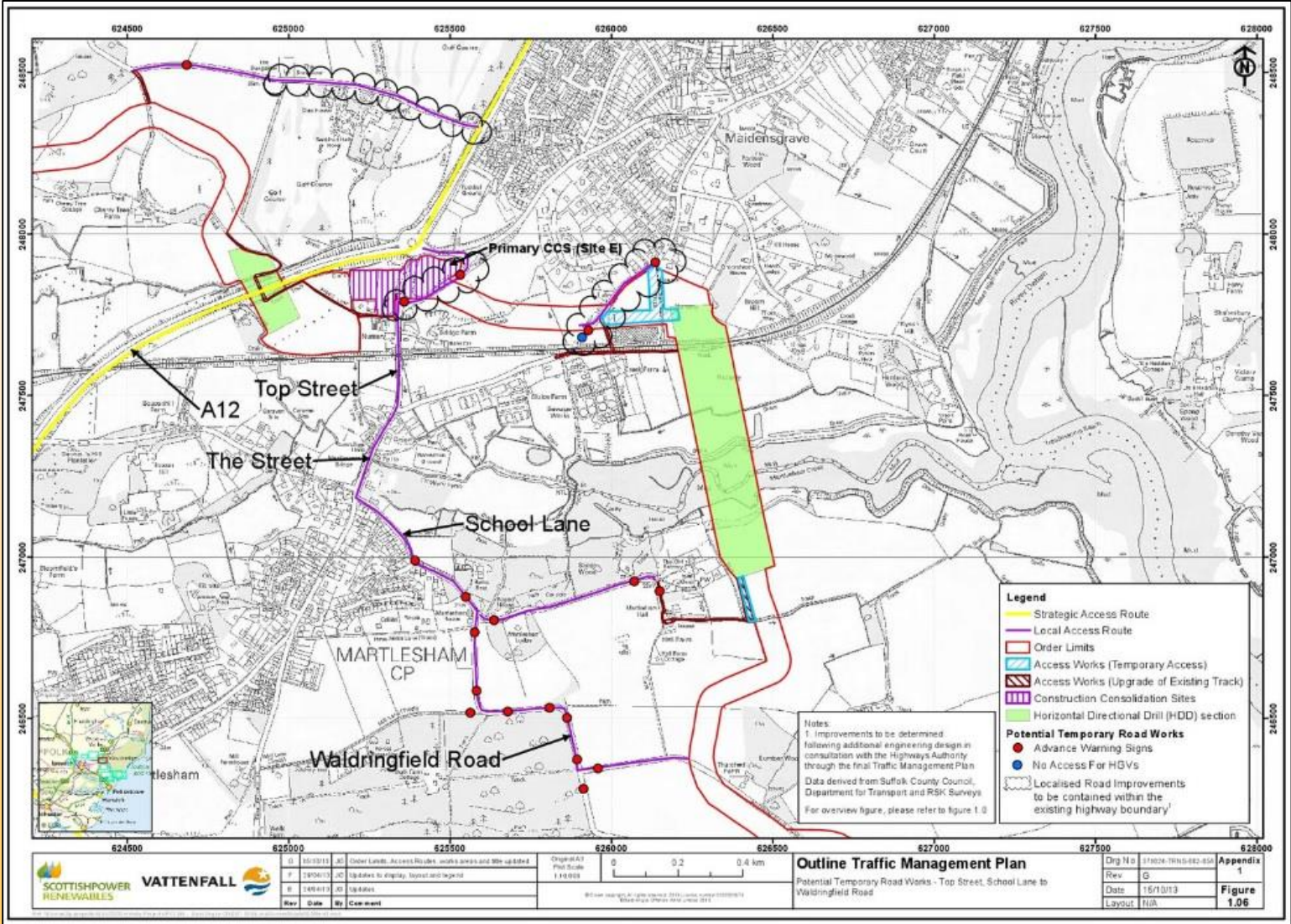


Cable route north of Waldringfield



Road works – Newbourne Road

East Anglia One Offshore Windfarm



Road works – Martlesham/Woodbridge

East Anglia One Offshore Windfarm



Sizewell C

Waldringfield Parish Council responded to the Sizewell Stage 2 consultation with our views on:

- The environment
- People & the economy
- Campus layout
- Transport
- Rail
- Sea
- Park & ride
- Road (A12 – villages bypass)
- Road (Yoxford/A1122)



We also contributed to the SCC and SCDC's joint response in a meeting in December 2016. SCC/SCDC's joint response can be seen at:

<http://www.eastsuffolk.gov.uk/assets/Planning/Sizewell/SCC-and-SCDC-response-to-EDF-Energy-2-Feb-2017.pdf>

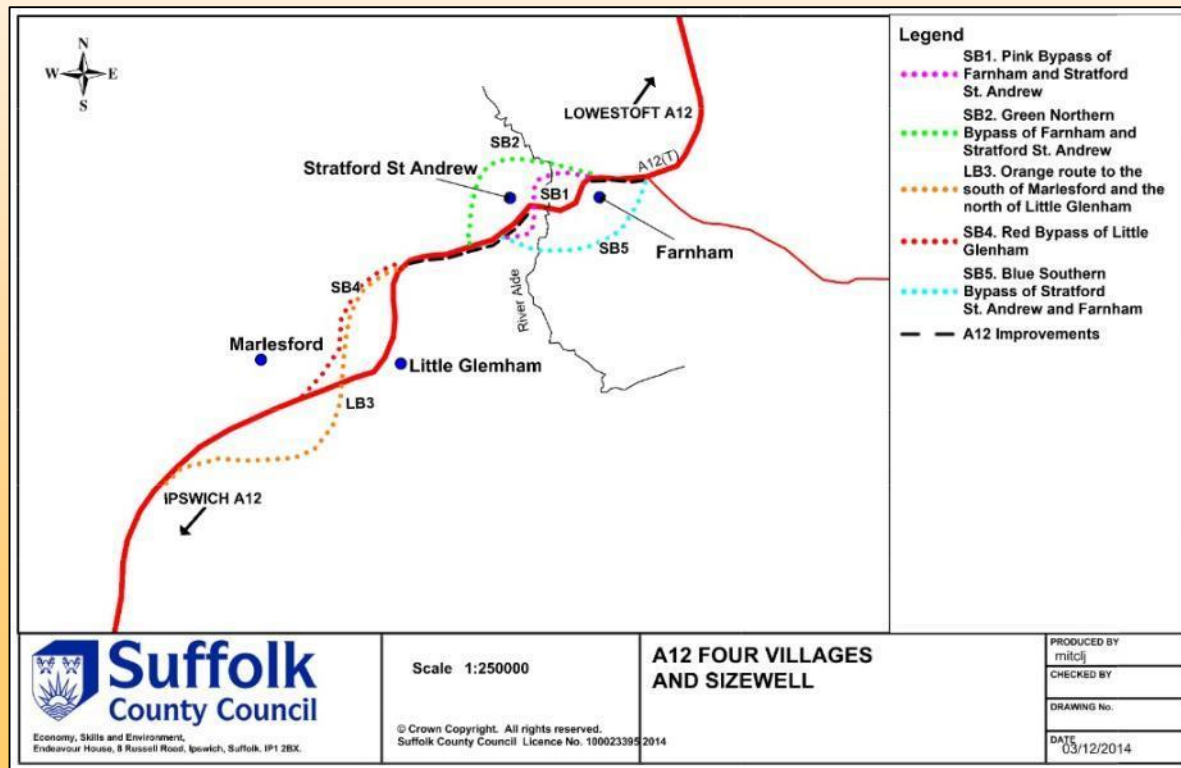
Waldringfield PC report, April 2017

Sizewell C

EDF presented 4 options for the A12 improvements:

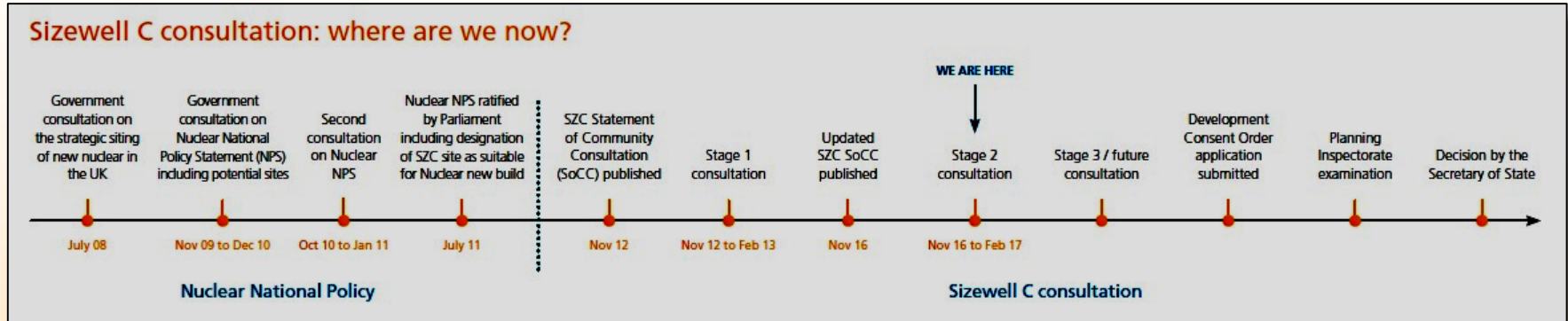
1. No change
2. Farnham bend road widening
3. Farnham bypass (one-village bypass)
4. Farnham and Stratford St Andrew bypass (two village bypass)

Waldringfield PC (as well as SCC and SCDC) do not consider any of these acceptable and advocate the 4 village bypass option (but EDF cannot be made to fund all of this)



Waldringfield PC report, April 2017

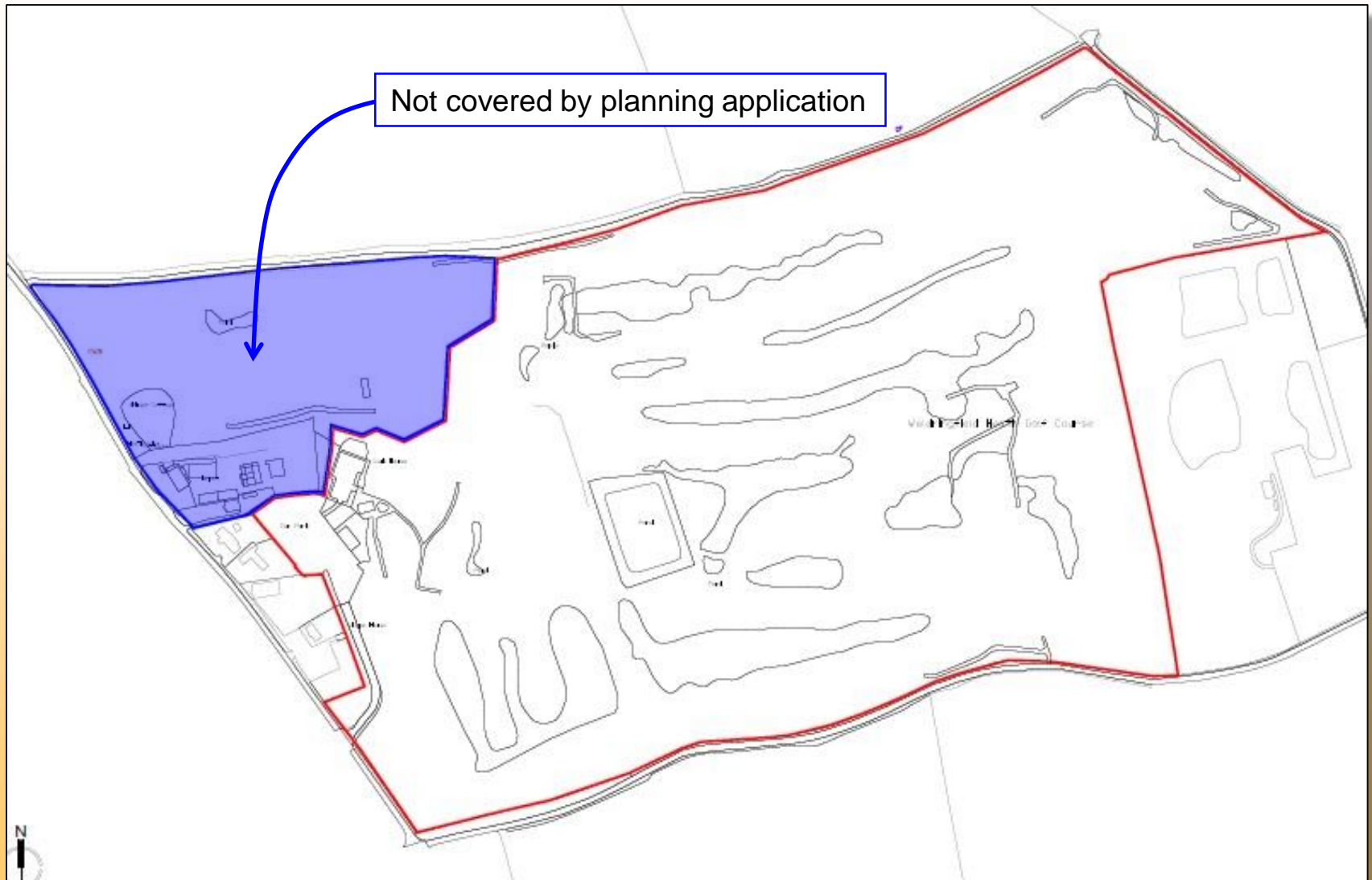
Sizewell C



Timeline

Waldringfield Golf Club

Waldringfield Golf Club



Information Board

The AONB Communities Conservation Fund provided a grant for an information board, which has now been installed on the wall below the Maybush (with the kind permission of the owner, Steve Lomas).



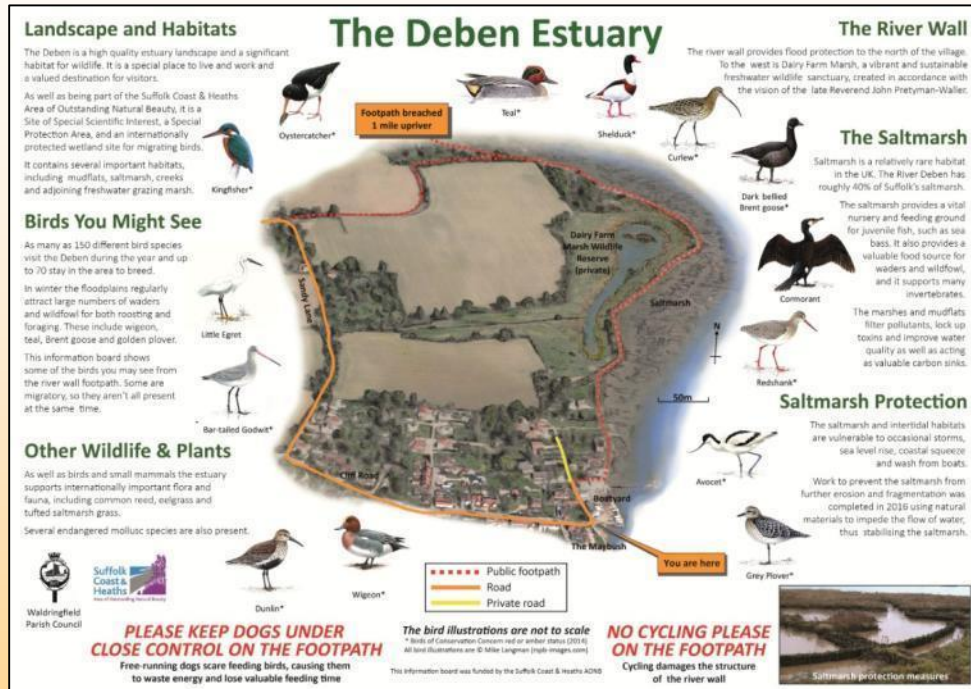
The following groups were consulted about the design and location of the board:

- Waldringfield Parish Council
- Waldringfield Wildlife Group
- River Deben Association
- Deben Estuary Partnership
- Suffolk Coast & Heaths AONB
- Waldringfield Flood Defence Group
- RSPB
- Dairy Farm Marsh trustees
- The Maybush
- Waldringfield boatyard

Information Board

The information board has several purposes:

- to inform people about the River Deben, its status and habitats
- to inform people about the wildlife, in particular the birds that can be seen from the footpath, and to help bird identification
- to inform people about the saltmarsh and its protection
- to show where the footpath goes, and in particular that there is a breach, so you can't get to Martlesham Creek on it, and there is a circular walk to save people from returning the way they came
- to deter people from cycling on the river wall, which damages it
- to deter people from letting their dogs run freely, which disturbs feeding birds



Drawings of birds were kindly donated by the RSPB

Play Equipment

The stepping snake was rotten and has been replaced



Bird protection has been added to the swings



The play surfaces have been cleaned and renovated



Questions?